



TOWN OF LUDLOW MUNICIPAL VULNERABILITY PREPAREDNESS PLANNING AND HAZARD MITIGATION PLAN UPDATE

Community Resilience Building Workshop #1
March 23, 2022



1

Welcome & Introductions



2

Thank You to Ludlow's MVP/HMP Core Team

- Ellie Villano
- Marc Strange
- Doug Stefancik
- Penny Lebel
- Andrea Crete
- Paulina Matusik
- Brian Shameklis
- Jim Goodreau
- Jocelyn Zepke
- Ryan Pease



3

Today's Agenda

- Introductions, MVP overview, and workshop goals
- Changes in climate and impacts on natural hazard risk
- Natural hazards risk assessment for Ludlow
- Small group break-out to identify strengths & vulnerabilities
- Small group reporting and finalization of strengths & vulnerabilities
- Introduction to Workshop #2



4

Why Are We Here?

- Help the Town of Ludlow improve preparedness for and resilience to natural hazard events
 - Understand community strengths and vulnerabilities
 - Plan for more frequent and intense weather events
 - Engage multiple stakeholders in the planning process
 - Identify short and long-term mitigation actions
 - Improve access to funding for mitigation and adaptation



5

MVP + HMP Grant



6

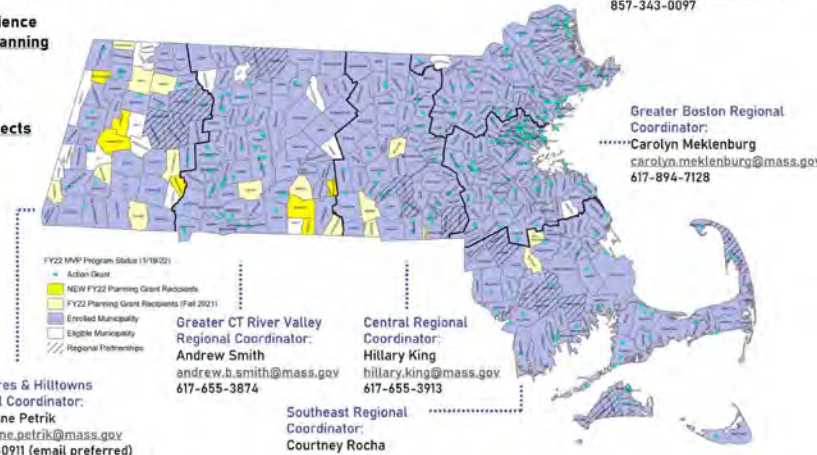
MVP Program

MVP Program Status

Community Resilience Building (CRB) Planning Grant Process
 95% participation
 335 communities

Action Grant Projects
 FY 18: 37
 FY 19: 36
 FY 20: 53
 FY 21: 41
 FY 22: 66

Total Awards \$65M to date



7

MVP Process

MVP Planning Grant



From MVP Program Municipal Staff Training for Planning Grants: <https://www.mass.gov/doc/mvp-planning-grant-municipal-staff-training-slides-january-2020/download>

8

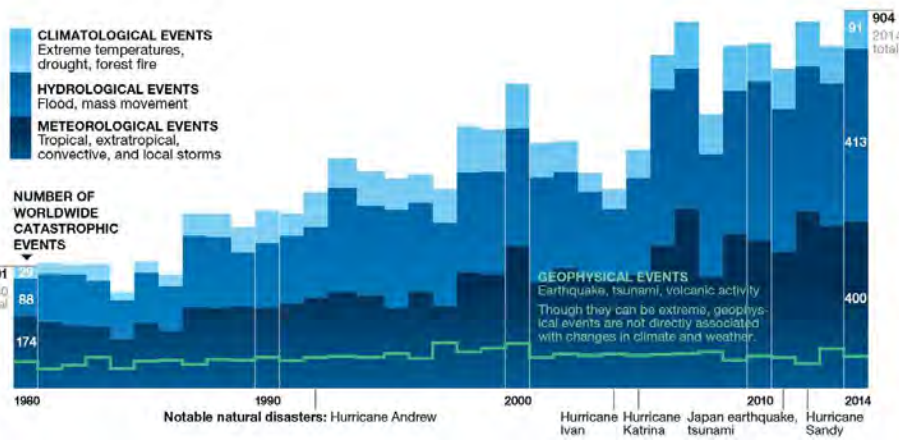
MVP Program

MVP CORE PRINCIPLES



9

The Future of Natural Hazards



<https://www.nationalgeographic.com/climate-change/how-to-live-with-it/weather.html>

10

The Future of Natural Hazards

- Weather = short-term local atmospheric conditions like rain, wind, or clouds

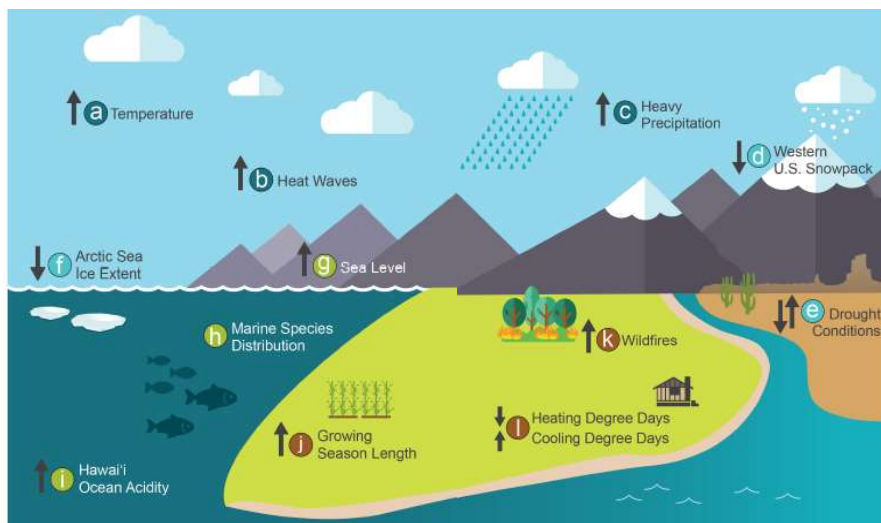
If you don't like the weather in New England, just wait a few minutes.

- Mark Twain

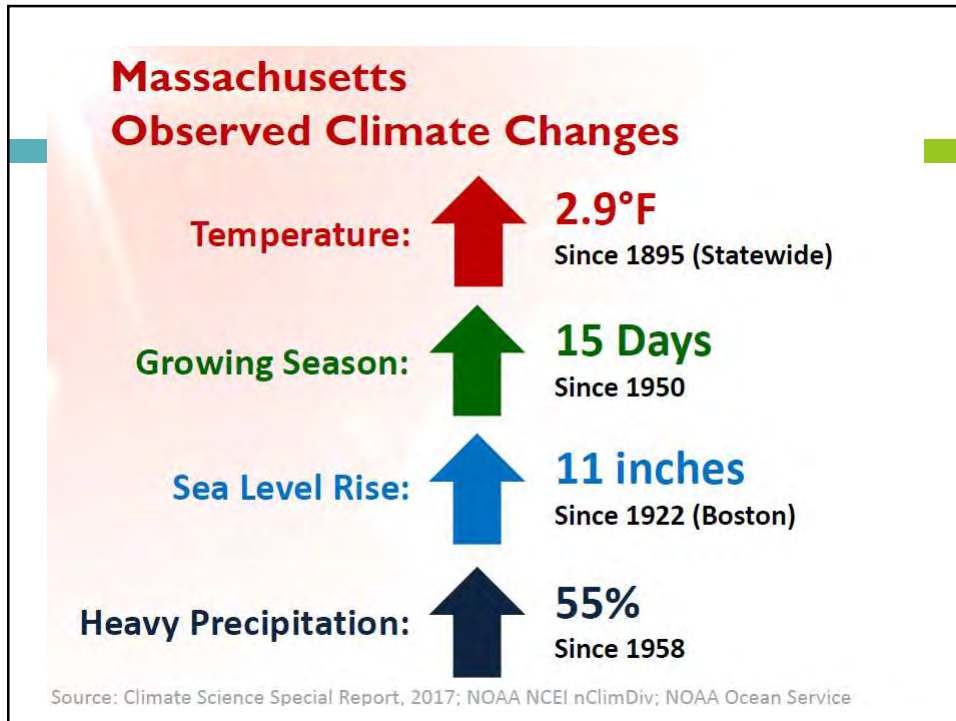
- Climate = long-term regional or global averages of temperature, humidity and rainfall patterns

11

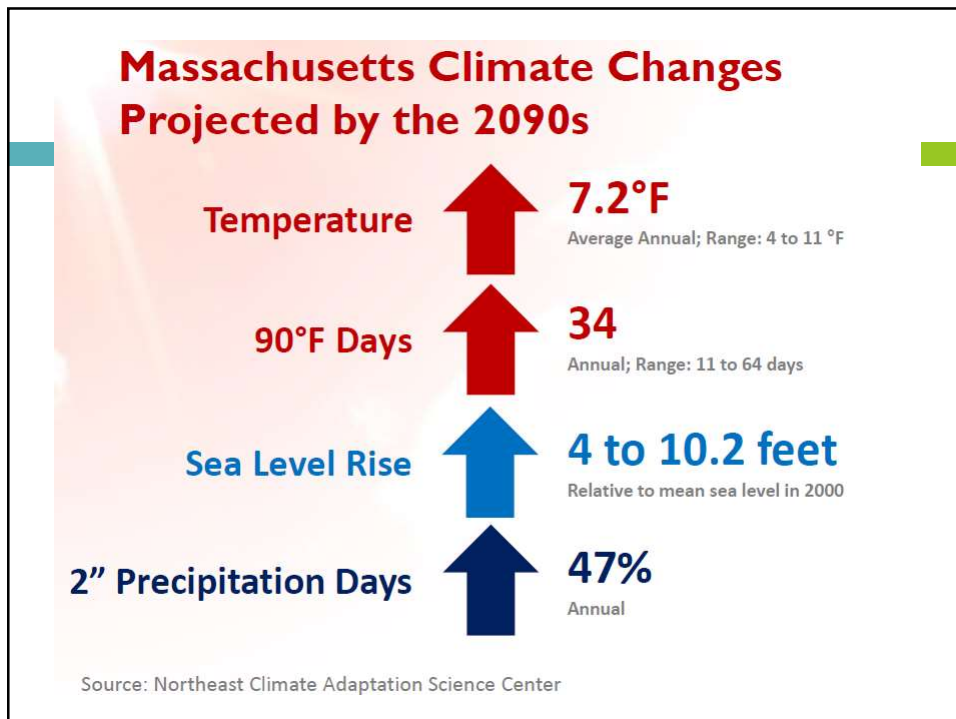
National Trends



12

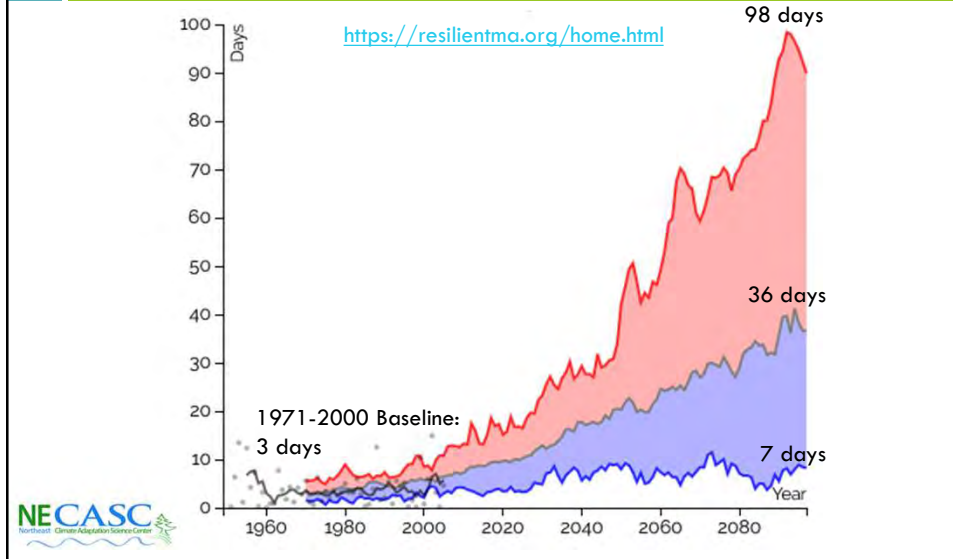


13



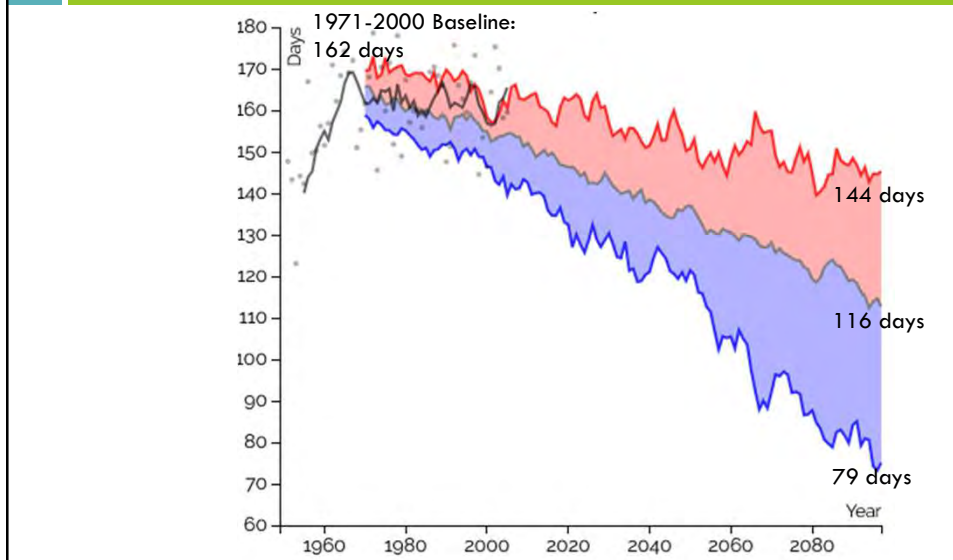
14

Climate Change – Chicopee River Basin, Annual Days Over 90° F



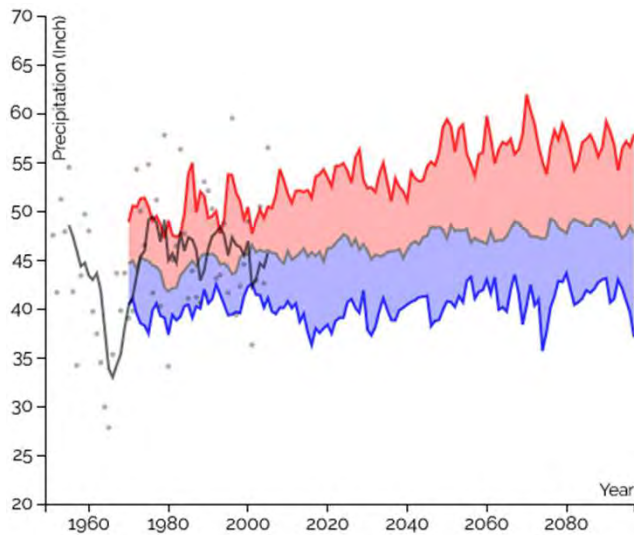
15

Climate Change – Chicopee River Basin, Annual Days Below 32° F



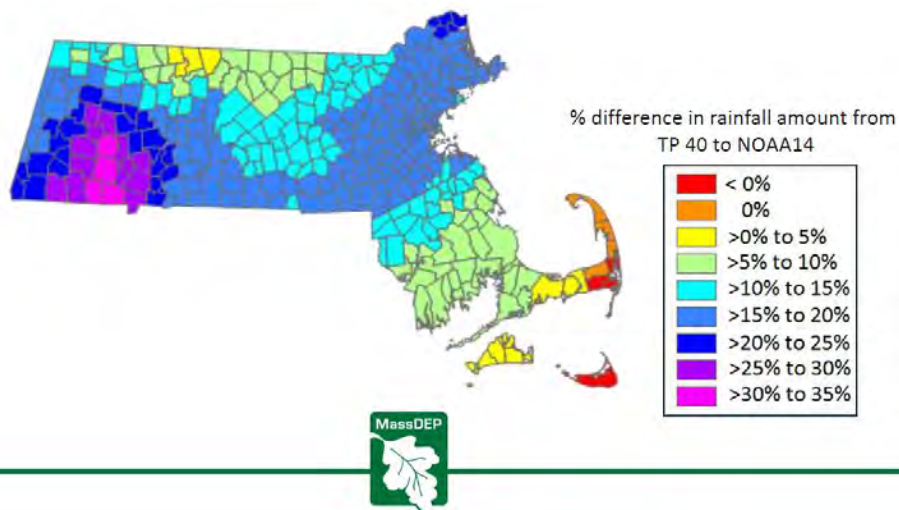
16

Climate Change – Chicopee River Basin, Annual Rainfall Amounts



17

100-Year Storm Rainfall Model Changes



18

Top Natural Hazards in Ludlow

Hurricane /
Tropical Storm

Severe Winter
Storm /
Nor'easter

Severe
Thunderstorm /
Wind / Tornado

Flooding

19

Changing Risk of Top Natural Hazards

Hurricane / Tropical
Storm

- Changes in ocean circulation and temperatures are making hurricane season longer and harder to predict

Severe Winter Storm
/ Nor'easter

- More winter precipitation is occurring as rainfall and freezing

Severe Thunderstorm
/ Wind / Tornado

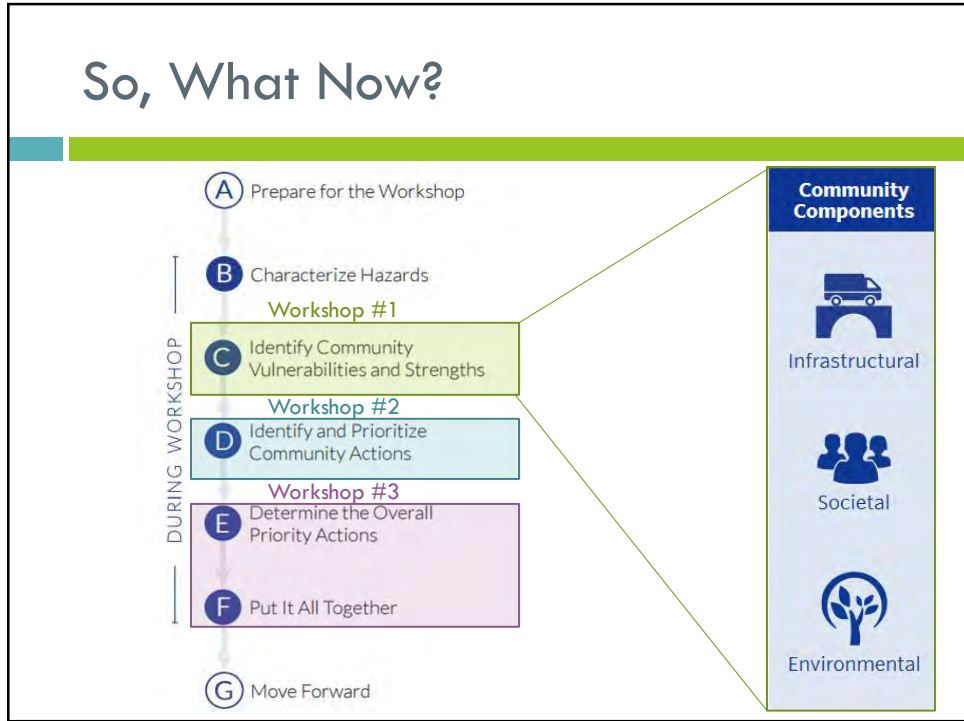
- Rainfall patterns are changing to fewer but more intense rainfall events

Flooding

- Stream crossings and stormwater systems based on previous rainfall models may be undersized for future storm events

20

So, What Now?



21

Community Risk from Hazards



22

What Are Community Components?

□ Infrastructure



□ Societal



□ Environmental



23

Small Group Exercise

Break out into small groups to identify strengths and vulnerabilities in the Town of Ludlow

24

Small Group Exercise – Report Out

- Designated reporter from each group will share assets and whether they are strengths and vulnerabilities to create a master list of all identified assets in Ludlow



25

Next Steps – Workshop #2



Brainstorm mitigation actions and strategies



Prioritize mitigation actions



Mitigation actions can be turned into MVP Action Grant or FEMA HMA Grant applications!

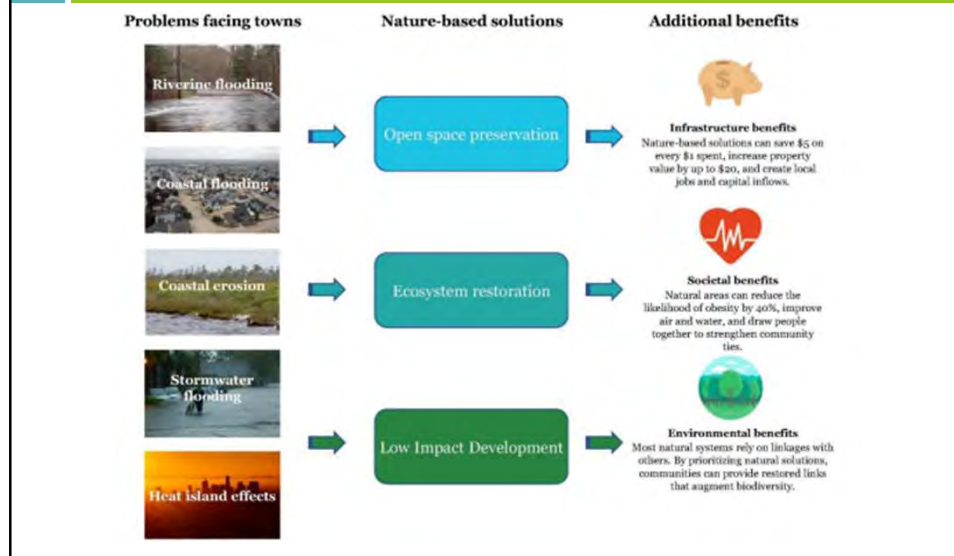
26

MVP Action Grant Project Types

- Vulnerability and Risk Assessment
 - Community Outreach and Education
 - Local Bylaws, Ordinances, Plans, and Other Management Measures
 - Redesigns and Retrofits
 - Nature-Based Flood Protection, Drought Mitigation, Water Quality, and Water Infiltration Techniques
 - Nature-Based Infrastructure and Technology Solutions to Reduce Vulnerability to Extreme Heat and Poor Air Quality
 - Nature-Based Solutions to Reduce Vulnerability to Other Climate Change Impacts
 - Ecological Restoration and Habitat Management to Increase Resiliency
- Energy Resilience
 - Chemical Safety
 - Land Acquisition for Resilience
 - Subsidized Low-Income Housing Resilience Strategies
 - Mosquito Control Districts

27

Nature-Based Solutions



28

Mitigation Actions

Projects that are NOT MVP-competitive:

- Maintenance
- Diesel generators
- Tree removal
- Emergency preparedness
- Hard infrastructure without core MVP components/priorities

29



THANK YOU!

<https://www.ludlow.ma.us/html/mvp/index.htm>

Emily Tully, Senior Planner, PVPC
 etully@pvpc.org/ (802) 829-0341

30