

STATE AID REIMBURSABLE PROGRAMS - PROJECT REQUEST

updated 12/17

00035

*2 Original Signed Project Request Forms are to be submitted.

CONTRACT # 50864

PROGRAM TYPE: Chapter 90 [X] Muni Bridge [] Complete Streets [] Other []

Project Name: 2020 Pavement Management Program

Primary Road: Center Street, East Street, Chapin Street, Sewell Street,

Local Road: (See Attached 2020 Pavement Management Program Summary)

Bridge #: _____

City/Town: Ludlow

Location(s) (See Attached 2020 Pavement Management Program Summary)

Length: 13,800 feet Width: Varies feet

PROJECT TYPE

Construction: [] Resurfacing: [X] Engineering: [] Equipment: []

Other: Pavement Markings

TYPICAL SECTION DETAILS: Indicate depths, special treatments, etc... Also please include sketch for Construction/Improvement Projects.

Surface: 1-1/2 Inches Type I HMA

Base Course: Milling: 3/4 Inch HMA Leveling Course or Reclaimed Pavement: 2 Inches HMA Binder

Foundation: Existing Base/Foundation or Reclaimed Pavement for Base Course and/or Sub-Base

Shoulders/Sidewalks: RAP or Loam & Seed No Sidewalks

SCOPE OF WORK:

Milling, Reclamation, Resurfacing & Pavement Markings (See Attached 2020 Pavement Management Program Summary) Crack Sealing Received Project Approval on 08-16-2019

WORK TO BE DONE:

Force Account: [] Advertised Contract: [X] Other: _____

Estimated Cost (Please attach estimate and list funding source(s)): \$ 1,041,933.76

These funds will pay 100% of Local Road Project costs to the limit of this assignment

CERTIFICATION

The design, engineering, construction, and future performance of the project, including maintenance, is the responsibility of the Municipality. The proposed work will conform to recognized engineering and construction methods. I/We herby certify under penalty of perjury the following: that the project is on a public way, and any necessary takings have been made; that all materials will comply with approved established specifications; that all weights and quantities will be accurate; that equipment rental rates are those established by MassDOT Highway or the advertised low bid; that all documentation will be checked for accuracy, and will be endorsed in accordance with municipal procedures for accountability.

Reviewed by: Signed: Daryl Amaral State Aid Engineer Date Road Classification Verified: Approved for \$ @ 100% District Highway Director Date

Signed: Michael G. Suprenant, PE Director of Public Works 07-13-2020 Highway Official's Title Date Kimberly H. Collins Town Accountant Accounting Official's Title Date Duly Authorized Municipal Officials

TOWN OF LUDLOW
DEPARTMENT OF PUBLIC WORKS
July 13, 2020

**2020 PAVEMENT MANAGEMENT PROGRAM
SUMMARY**

MILL & OVERLAY

<u>STREET</u>	<u>FROM</u>	<u>TO</u>	<u>Length</u>	<u>Width</u>	<u>Scope of Work</u>
RANDALL ROAD	West Street	Power Lines	3,500	30	Milling 2" Depth, 3/4" Leveling Course & 1-1/2" Type I HMA Surface Course
WINSOR STREET	East Street	499 Winsor Street	2,650	38	Milling 2" Depth, 3/4" Leveling Course & 1-1/2" Type I HMA Surface Course
WINSOR STREET	499 Winsor Street	Stevens Street	750	30	Milling 2" Depth, 3/4" Leveling Course & 1-1/2" Type I HMA Surface Course
WARREN STREET	East Street	Winsor Street	600	38	Milling 2" Depth, 3/4" Leveling Course & 1-1/2" Type I HMA Surface Course
SUB-TOTAL			7,500		

RECLAIM PAVEMENT & RESURFACE

<u>STREET</u>	<u>FROM</u>	<u>TO</u>	<u>Length</u>	<u>Width</u>	<u>Scope of Work</u>
PARKVIEW STREET	Chapin Street	Mountain View Street	1,250	25	Reclaim Pavement 8" Depth, 2" Binder Course & 1-1/2" Type I HMA Surface Course
MOUNTAIN VIEW STREET	Parkview Street	Stivens Terrace	500	28	Reclaim Pavement 8" Depth, 2" Binder Course & 1-1/2" Type I HMA Surface Course
REYNOLDS STREET	Chapin Street	End	2,350	30	Reclaim Pavement 8" Depth, 2" Binder Course & 1-1/2" Type I HMA Surface Course
PONDVIEW DRIVE	Reynolds Street	Posner Circle	2,200	30	Reclaim Pavement 8" Depth, 2" Binder Course & 1-1/2" Type I HMA Surface Course
SUB-TOTAL			6,300		
TOTAL			13,800		

PAVEMENT MARKINGS

<u>STREET</u>	<u>FROM</u>	<u>TO</u>	<u>Length</u>	<u>Scope of Work</u>
CENTER STREET	Alden Street	959 Center Street	11,900	4" Double Yellow Line & 4" Edge Lines (Painted)
CHAPIN STREET	Center Street	Holyoke Street	5,600	4" Double Yellow Line & 4" Edge Lines (Painted)
CADY STREET	Fuller Street	West Street	7,000	4" Double Yellow Line & 4" Edge Lines (Painted)
RANDALL ROAD	West Street	Power Lines	3,250	4" Double Yellow Line, 4" White Edge Lines, Arrows & Legends (Thermoplastic)
WEST AVENUE	Center Street	Center Street	-	White Arrows & Legends (Thermoplastic)
WINSOR STREET	East Street	Stevens Street	3,400	4" Double Yellow Line & 4" White Edge Lines (Thermoplastic)
WARREN STREET	East Street	Winsor Street	600	4" Double Yellow Line & 4" White Edge Lines (Thermoplastic)
CENTER STREET	East Street	Arch Street	3,000	4" Double Yellow Line, 4" White Edge Lines, Arrows & Legends (Thermoplastic)
CENTER STREET	Alden Street	Belchertown Town Line	8,200	4" Double Yellow Line & 4" White Edge Lines (Thermoplastic)
CENTER STREET	Chapin Street	959 Center Street	9,600	4" Double Yellow Line & 4" White Edge Lines (Thermoplastic)
EAST STREET	Poole Street	Wilbraham Town Line	4,200	4" Double Yellow Line & 4" White Edge Lines (Thermoplastic)
EAST STREET	Miller Street	Chapin Street	5,000	4" Double Yellow Line & 4" White Edge Lines (Thermoplastic)
CHAPIN STREET	East Street	Center Street	3,500	4" Double Yellow Line & 4" White Edge Lines (Thermoplastic)
SEWALL STREET	Center Street	Winsor Street	2,500	4" Double Yellow Line & 4" White Edge Lines (Thermoplastic)
HOWARD STREET	Sewall Street	Oak Street	575	4" Double Yellow Line & 4" White Edge Lines (Thermoplastic)
FULLER STREET	West Avenue	Rood Street	20,700	4" Double Yellow Line & 4" White Edge Lines (Thermoplastic)
SUB-TOTAL			89,025	

TOWN OF LUDLOW
DEPARTMENT OF PUBLIC WORKS
July 13, 2020

**2020 PAVEMENT MANAGEMENT PROGRAM
SUMMARY**

CRACKSEALING (CHAPTER 90 PROJECT APPROVAL 08-16-2019)

<u>STREET</u>	<u>FROM</u>	<u>TO</u>	<u>Length</u>	<u>Width</u>	<u>Scope of Work</u>
WEST STREET	Holyoke Street	Springfield City Line	8,100	24	Hot Applied Asphaltic Crack Filler (Polyester Fibers)
EAST STREET	Chapin Street	Wilbraham Town Line	13,125	24	Hot Applied Asphaltic Crack Filler (Polyester Fibers)
ARCH STREET	Center Street	West Avenue	460	24	Hot Applied Asphaltic Crack Filler (Polyester Fibers)
LYON STREET	Munsing Street	Granby Town Line	8,000	24	Hot Applied Asphaltic Crack Filler (Polyester Fibers)
CHERRY STREET	Fuller Street	Center Street	750	24	Hot Applied Asphaltic Crack Filler (Polyester Fibers)
RANDALL ROAD	Power Lines	2nd County Jail Entrance	3,000	24	Hot Applied Asphaltic Crack Filler (Polyester Fibers)
WEST AVENUE	Center Street	West Street	7,750	24	Hot Applied Asphaltic Crack Filler (Polyester Fibers)
CENTER STREET	Arch Street	East Street	3,000	24	Hot Applied Asphaltic Crack Filler (Polyester Fibers)
SUB-TOTAL			44,185		



STATE AID REIMBURSABLE PROGRAM – ENVIRONMENTAL PUNCH LIST
Chapter 90 Program

Contract #: 50864

Project Name: 2020 Pavement Management Program

City/Town: LUDLOW MassDOT Highway District # 2

Proposed Work: (See Attached 2020 Pavement Management Program Summary)

Construction _____ Resurfacing _____ X Improvement _____ Engineering _____ Other Pavement Marks _____

NOTE: ALL ENVIRONMENTAL PERMITS / APPROVALS MUST BE OBTAINED PRIOR TO CONSTRUCTION.

1. Will the pavement width increase 4 ft. or more for an aggregate length of 1000 ft. or more? Yes _____ No X
 2. Will the bank or terrain (other than alteration required for installation of equipment or structures) be altered at a distance exceeding 10 ft. from the pavement? Yes _____ No X
 3. Will the removal of 5 or more trees with diameters of 14 inches or more be required? Yes _____ No X
 4. Will more than 300 ft. of stone wall be removed or altered? Yes _____ No X
 5. Will the project involve construction of a parking lot with capacity of 50 cars or more? Yes _____ No X
 6. Are any other MEPA review thresholds exceeded (see 301 CMR 11.00)?
If your answer is YES to any of questions 1-6, you must file an Environmental Notification Form (ENF).* Yes _____ No X
 7. Will the project be on a "Scenic Road" (Acts of 1973, C. 67)?
If your answer is YES, your Planning Board or Selectmen / City Council must give written consent for cutting / removal of trees or changes to stone walls. Yes _____ No X
 8. Have all necessary takings, easements, rights of entry, etc. been completed?
If a county Hearing is required, it must be held prior to starting work Yes X No _____
 9. Are archaeological, anthropological, historical, etc. problems / impacts anticipated?* Yes _____ No X
 10. **Is any work proposed in or within 100 ft. of a wetland (stream, pond, swamp, etc.)?***
If your answer is YES, you must file the project with your local Conservation Commission prior to starting work. Yes X No _____
 11. If work is proposed in a wetland or water resource, a permit may be required from the Department of Environmental Protection, Corps of Engineers, etc.. Verify with agencies.* Yes _____ No X
- * See Appendix K for a List of Environmental Agencies.

Validation

It is recognized that the purpose of this information is to assist the MassDOT Highway Division in approving the Chapter 90 Project Request Form (of which this is a part). Accordingly, the information provided here is intended to be complete and correct with no intentional errors or material omissions. Any action taken by MassDOT Highway Division on the basis of this information shall not legally or financially obligate MassDOT Highway Division to support or defend the municipality, and the municipality shall save harmless MassDOT Highway Division for any action.

Duly Authorized Municipal Officials LUDLOW BOARD OF PUBLIC WORKS	Reviewed and Approved for Transmittal by: LUDLOW CONSERVATION COMMISSION
	Penny Lebel Vice Chair Conservation Commission
Signatures Date July 14, 2020	Signatures Date July 15, 2020

**This form should be submitted in duplicate with original signatures to the MassDOT Highway District Office.
This form should accompany the Project Request Form.**



CHAPTER 90 – PRELIMINARY ESTIMATE

City /Town of LUDLOW - 2020 Pavement Management Program Contract # 50864

Project Location/Road Randall Road, Parkview Street, Mountain View Street, Grimes Street, Winsor Street, Reynolds Street, Pondview Drive, Warren Street, Center Street, East Street, Chapin Street, Sewell Street, Howard Street, Fuller Street, Cady Street, Rood Street, Church Street, Miller Street & Cherry Street

Date 7/13/2020

ITEM #	QTY.	UNIT	DESCRIPTION OF ITEM	UNIT PRICE \$	AMOUNT \$
100.0143	35	HR	RUBBER TIRE EXCAVATOR AND OPERATOR 30,000 LB TO 40,000 LB CLASS - LUDLOW BID ITEM C-14.3	140.00	4,900.00
129.	50,744	SY	PAVEMENT MILLING - LUDLOW BID ITEM C-6.2A	1.90	96,413.60
129.1	28	HR	PAVEMENT MILLING AROUND STRUCTURES - LUDLOW BID ITEM C-6.2B	332.00	9,296.00
201.	6	EA	CATCH BASIN - LUDLOW BID ITEM C-2	1,000.00	6,000.00
220.	139	EA	DRAINAGE STRUCTURE ADJUSTED - LUDLOW BID ITEM C-2 & 2A	375.00	52,125.00
220.2	59	FT	DRAINAGE STRUCTURE REBUILT - LUDLOW BID ITEM C-2B	375.00	22,125.00
222.3	1	EA	FRAME AND GRATE OR COVER - LUDLOW BID ITEM C-2D	400.00	400.00
403.	20,028	SY	RECLAIMED PAVEMENT FOR BASE COURSE AND/OR SUB-BASE - LUDLOW BID ITEM C-6.1D	2.65	53,074.20
460.	7,439	TON	HOT MIX ASPHALT - LUDLOW BID ITEM C-1.1	64.70	481,303.30
464.	3,790	GAL	ASPHALT EMULSION FOR TACK COAT - LUDLOW BID ITEM C-1.5	5.70	21,603.00
470.	5	TON	HOT MIX ASPHALT BERM, TYPE A - LUDLOW BID ITEM C-1.2	185.00	925.00
472.	228	TON	HOT MIX ASPHALT FOR MISCELLANEOUS WORK - LUDLOW BID ITEM C-1.3	66.00	15,048.00
765.	7,000	SY	SEEDING - LUDLOW BID ITEM C-17	0.80	5,600.00
860.104	49,000	FT	4 INCH REFLECTORIZED WHITE LINE (PAINTED) - LUDLOW BID ITEM C-10.1	0.07	3,430.00
861.104	49,000	FT	4 INCH REFLECTORIZED YELLOW LINE (PAINTED) - LUDLOW BID ITEM C-10.2	0.07	3,430.00
864.041	1	EA	PAVEMENT ARROW STRAIGHT REFL. WHITE (THERMOPLASTIC) - LUDLOW BID ITEM C-10.14	75.00	75.00
864.042	8	EA	PAVEMENT ARROW CURVED REFL. WHITE (THERMOPLASTIC) - LUDLOW BID ITEM C-10.16	85.00	680.00
864.043	5	EA	PAVEMENT LEGEND REFL. WHITE (THERMOPLASTIC) - LUDLOW BID ITEM C-10.18	125.00	625.00
866.104	141,300	FT	4 INCH REFLECTORIZED WHITE LINE (THERMOPLASTIC) - LUDLOW BID ITEM C-10.5	0.49	69,237.00
866.112	2,258	FT	12 INCH REFLECTORIZED WHITE LINE (THERMOPLASTIC) - LUDLOW BID ITEM C-10.11	2.95	6,661.10
867.104	141,300	FT	4 INCH REFLECTORIZED YELLOW LINE (THERMOPLASTIC) - LUDLOW BID ITEM C-10.6	0.49	69,237.00
867.112	354	FT	12 INCH REFLECTORIZED YELLOW LINE (THERMOPLASTIC) - LUDLOW BID ITEM C-10.11	2.95	1,044.30
999.001	436	HR	POLICE DETAIL	55.00	23,980.00
			10% CONTINGENCY		94,721.26
TOTAL					1,041,933.76

CHAPTER 90 CONTRACT # 50864

- PRELIMINARY ESTIMATE OF QUANTITIES - DETAIL SHEET -

TOWN-CITY LUDLOW PAVEMENT MANAGEMENT PROGRAM YEAR 2020

VARIOUS LOCATIONS

DATE - JULY 9, 2020

ITEM 100.0143 **RUBBER TIRE EXCAVATOR AND OPERATOR 30,000 LB TO 40,000 LB CLASS**

LUDLOW BID

ITEM C-14.3

PARKVIEW STREET - Chapin Street to Mountain View Street

1.25 DAYS X 8 HR/DAY = 10 HR

MOUNTAIN VIEW STREET - Parkview Street to Stevens Terrace

0.625 DAYS X 8 HR/DAY = 5 HR

REYNOLDS STREET - Chapin Street to End

1.25 DAYS X 8 HR/DAY = 10 HR

PONDVIEW DRIVE - Reynolds Street to Posner Circle

1.25 DAYS X 8 HR/DAY = 10 HR

TOTAL 35 HR

ITEM 129.

LUDLOW BID

ITEM C-6.2A

PAVEMENT MILLING

RANDALL ROAD - West Street to Power Lines

3,500 FT X 30 FT ÷ 9 SQFT/SQYD = 11,667 SQYD

WINSOR STREET - East Street to 499 Winsor Street

2650 FT X 38 FT ÷ 9 SQFT/SQYD = 11,189 SQYD

WINSOR STREET - 499 Winsor Street to Stevens Street

750 FT X 30 FT ÷ 9 SQFT/SQYD = 2,500 SQYD

WARREN STREET - East Street to Winsor Street

600 FT X 38 FT ÷ 9 SQFT/SQYD = 2,533 SQYD

TOTAL 50,744 SQYD

13,689

SQYD

- PRELIMINARY ESTIMATE OF QUANTITIES - DETAIL SHEET -

TOWN-CITY LUDLOW PAVEMENT MANAGEMENT PROGRAM YEAR 2020

VARIOUS LOCATIONS

DATE - JULY 9, 2020

ITEM 129.1

PAVEMENT MILLING AROUND STRUCTURES

LUDLOW BID
ITEM C-6.2B

RANDALL ROAD - West Street to Power Lines
16 EA X 0.5 HR/EA = 8 HR

WINSOR STREET - East Street to Stevens Street
32 EA X 0.5 HR/EA = 16 HR

WARREN STREET - East Street to Winsor Street
8 EA X 0.5 HR/EA = 4 HR

TOTAL 28 HR

ITEM 201.

CATCH BASIN

LUDLOW BID
ITEMS C-2

WINSOR STREET - East Street to Stevens Street
COUNT IN FIELD 6 EA

TOTAL 6 EA

ITEM 220.

DRAINAGE STRUCTURE ADJUSTED

LUDLOW BID
ITEMS C-2 & C-2A

RANDALL ROAD - West Street to Power Lines
COUNT IN FIELD 19 EA

PARKVIEW STREET - Chapin Street to Mountain View Street
COUNT IN FIELD 5 EA

MOUNTAIN VIEW STREET - Parkview Street to Stevens Terrace
COUNT IN FIELD 3 EA

WINSOR STREET - East Street to Stevens Street
COUNT IN FIELD 49 EA

- PRELIMINARY ESTIMATE OF QUANTITIES - DETAIL SHEET -

TOWN-CITY LUDLOW PAVEMENT MANAGEMENT PROGRAM YEAR 2020

VARIOUS LOCATIONS

DATE - JULY 9, 2020

ITEM 220.

DRAINAGE STRUCTURE ADJUSTED (CONTINUED)

LUDLOW BID

ITEMS C-2 & C-2A

REYNOLDS STREET - Chapin Street to End

COUNT IN FIELD 24 EA

PONDVIEW DRIVE - Reynolds Street to Posner Circle

COUNT IN FIELD 32 EA

WARREN STREET - East Street to Winsor Street

COUNT IN FIELD 7 EA

TOTAL 139 EA

ITEM 220.2

DRAINAGE STRUCTURE REBUILT

LUDLOW BID

ITEM C-2B

RANDALL ROAD - West Street to Power Lines

COUNT IN FIELD 10 FT

PARKVIEW STREET - Chapin Street to Mountain View Street

COUNT IN FIELD 10 FT

WINSOR STREET - East Street to Stevens Street

COUNT IN FIELD 10 FT

REYNOLDS STREET - Chapin Street to End

COUNT IN FIELD 10 FT

PONDVIEW DRIVE - Reynolds Street to Posner Circle

COUNT IN FIELD 15 FT

WARREN STREET - East Street to Winsor Street

COUNT IN FIELD 4 FT

TOTAL 59 FT

CHAPTER 90 CONTRACT # 50864

- PRELIMINARY ESTIMATE OF QUANTITIES - DETAIL SHEET -

TOWN-CITY LUDLOW PAVEMENT MANAGEMENT PROGRAM YEAR 2020

VARIOUS LOCATIONS

DATE - JULY 9, 2020

ITEM 222.3

LUDLOW BID

ITEM C-2D

FRAME AND GRATE OR COVER - MUNICIPAL STANDARD

PARKVIEW STREET - Chapin Street to Mountain View Street

COUNT IN FIELD 1 EA

TOTAL 1 EA

ITEM 403.

LUDLOW BID

ITEM C-6.1D

RECLAIMED PAVEMENT FOR BASE COURSE AND/OR SUB-BASE

PARKVIEW STREET - Chapin Street to Mountain View Street

1,250 FT X 25 FT ÷ 9 SQFT/SQYD = 3,472 SQYD

MOUNTAIN VIEW STREET - Parkview Street to Stivens Terrace

500 FT X 28 FT ÷ 9 SQFT/SQYD = 1,389 SQYD

REYNOLDS STREET - Chapin Street to End

2,350 FT X 30 FT ÷ 9 SQFT/SQYD = 7,833 SQYD

PONDVIEW DRIVE - Reynolds Street to Posner Circle

2,200 FT X 30 FT ÷ 9 SQFT/SQYD = 7,333 SQYD

TOTAL 20,028 SQYD

CHAPTER 90 CONTRACT # 50864

- PRELIMINARY ESTIMATE OF QUANTITIES - DETAIL SHEET -

TOWN-CITY LUDLOW

PAVEMENT MANAGEMENT PROGRAM

YEAR 2020

VARIOUS LOCATIONS

DATE - JULY 9, 2020

ITEM 460.

LUDLOW BID

ITEM C-1.1

HOT MIX ASPHALT

RANDALL ROAD - West Street to Power Lines

3/4 " Leveling Course

11,667 SY X 0.75 IN X 0.56 TON/SY-IN 490 TON

1-1/2" Top Course

11,667 SY X 1.5 IN X 0.56 TON/SY-IN 980 TON

PARKVIEW STREET - Chapin Street to Mountain View Street

2 " Binder Course

3,472 SY X 2 IN X 0.56 TON/SY-IN 389 TON

1-1/2" Top Course

3,472 SY X 1.5 IN X 0.56 TON/SY-IN 292 TON

MOUNTAIN VIEW STREET - Parkview Street to Stevens Terrace

2 " Binder Course

1,389 SY X 2 IN X 0.56 TON/SY-IN 156 TON

1-1/2" Top Course

1,389 SY X 1.5 IN X 0.56 TON/SY-IN 117 TON

WINSOR STREET - East Street to Stevens Street

3/4 " Leveling Course

13,689 SY X 0.75 IN X 0.56 TON/SY-IN 575 TON

1-1/2" Top Course

13,689 SY X 1.5 IN X 0.56 TON/SY-IN 1,150 TON

CHAPTER 90 CONTRACT # 50864

- PRELIMINARY ESTIMATE OF QUANTITIES - DETAIL SHEET -

TOWN-CITY LUDLOW PAVEMENT MANAGEMENT PROGRAM YEAR 2020

VARIOUS LOCATIONS

DATE - JULY 9, 2020

ITEM 460.

HOT MIX ASPHALT (CONTINUED)

LUDLOW BID

ITEM C-1.1

REYNOLDS STREET - Chapin Street to End

2 " Binder Course

7,833 SY X 2 IN X 0.56 TON/SY-IN 877 TON

1-1/2" Top Course

7,833 SY X 1.5 IN X 0.56 TON/SY-IN 658 TON

PONDVIEW DRIVE - Reynolds Street to Posner Circle

2 " Binder Course

7,333 SY X 2 IN X 0.56 TON/SY-IN 821 TON

1-1/2" Top Course

7,333 SY X 1.5 IN X 0.56 TON/SY-IN 616 TON

WARREN STREET - East Street to Winsor Street

3/4 " Leveling Course

2,533 SY X 0.75 IN X 0.56 TON/SY-IN 106 TON

1-1/2" Top Course

2,533 SY X 1.5 IN X 0.56 TON/SY-IN 213 TON

TOTAL

7,439 TON

ITEM 464.

ASPHALT EMULSION FOR TACK COAT

LUDLOW BID

ITEM C-1.5

RANDALL ROAD - West Street to Power Lines

11,667 SY X 0.05 GAL/SY X 2 COURSES 1,167 GAL

PARKVIEW STREET - Chapin Street to Mountain View Street

3,472 SY X 0.05 GAL/SY X 1 COURSE 174 GAL

MOUNTAIN VIEW STREET - Parkview Street to Stevens Terrace

1,389 SY X 0.05 GAL/SY X 1 COURSE 69 GAL

CHAPTER 90 CONTRACT # 50864

- PRELIMINARY ESTIMATE OF QUANTITIES - DETAIL SHEET -

TOWN-CITY LUDLOW PAVEMENT MANAGEMENT PROGRAM YEAR 2020

VARIOUS LOCATIONS

DATE - JULY 9, 2020

ITEM 464. **ASPHALT EMULSION FOR TACK COAT (CONTINUED)**

LUDLOW BID

ITEM C-1.5

WINSOR STREET - East Street to Stevens Street

13,689 SY X 0.05 GAL/SY X 2 COURSES 1,369 GAL

REYNOLDS STREET - Chapin Street to End

7,833 SY X 0.05 GAL/SY X 1 COURSE 392 GAL

PONDVIEW DRIVE - Reynolds Street to Posner Circle

7,333 SY X 0.05 GAL/SY X 1 COURSE 367 GAL

WARREN STREET - East Street to Winsor Street

2,533 SY X 0.05 GAL/SY X 2 COURSES 253 GAL

TOTAL 3,790 GAL

ITEM 470. **HOT MIX ASPHALT BERM, TYPE A**

LUDLOW BID

ITEM C-1.2

PARKVIEW STREET - Chapin Street to Mountain View Street

200 FT X 0.024 TON/FT = 5 TON

TOTAL 5 TON

CHAPTER 90 CONTRACT # 50864

- PRELIMINARY ESTIMATE OF QUANTITIES - DETAIL SHEET -

TOWN-CITY LUDLOW PAVEMENT MANAGEMENT PROGRAM YEAR 2020

VARIOUS LOCATIONS

DATE - JULY 9, 2020

ITEM 472.

LUDLOW BID

ITEM C-1.3

HOT MIX ASPHALT FOR MISCELLANEOUS WORK

PARKVIEW STREET - Chapin Street to Mountain View Street

12 Driveway Aprons Average 3" X 12' X 12'

192 SY X 3 IN X 0.56 TON/SY-IN 32 TON

MOUNTAIN VIEW STREET - Parkview Street to Stivens Terrace

7 Driveway Aprons Average 3" X 12' X 12'

112 SY X 3 IN X 0.56 TON/SY-IN 19 TON

WINSOR STREET - East Street to Stevens Street

18 Driveway Aprons Average 3" X 12' X 12'

288 SY X 3 IN X 0.56 TON/SY-IN 48 TON

REYNOLDS STREET - Chapin Street to End

18 Driveway Aprons Average 3" X 12' X 12'

368 SY X 3 IN X 0.56 TON/SY-IN 62 TON

PONDVIEW DRIVE - Reynolds Street to Posner Circle

21 Driveway Aprons Average 3" X 12' X 12'

336 SY X 3 IN X 0.56 TON/SY-IN 56 TON

WARREN STREET - East Street to Winsor Street

4 Driveway Aprons Average 3" X 12' X 12'

64 SY X 3 IN X 0.56 TON/SY-IN 11 TON

TOTAL 228 TON

CHAPTER 90 CONTRACT # 50864

- PRELIMINARY ESTIMATE OF QUANTITIES - DETAIL SHEET -

TOWN-CITY LUDLOW PAVEMENT MANAGEMENT PROGRAM YEAR 2020

VARIOUS LOCATIONS

DATE - JULY 9, 2020

ITEM 765.

SEEDING

LUDLOW BID

ITEM C-17

PARKVIEW STREET - Chapin Street to Mountain View Street
1,250 FT X 5 FT X 2 ÷ 9 SQFT/SQYD = 1,389 SQYD

MOUNTAIN VIEW STREET - Parkview Street to Stivens Terrace
500 FT X 5 FT X 2 ÷ 9 SQFT/SQYD = 556 SQYD

REYNOLDS STREET - Chapin Street to End
2,350 FT X 5 FT X 2 ÷ 9 SQFT/SQYD = 2,611 SQYD

PONDVIEW DRIVE - Reynolds Street to Posner Circle
2,200 FT X 5 FT X 2 ÷ 9 SQFT/SQYD = 2,444 SQYD

TOTAL 7,000 SQYD

CHAPTER 90 CONTRACT # 50864

- PRELIMINARY ESTIMATE OF QUANTITIES - DETAIL SHEET -

TOWN-CITY LUDLOW PAVEMENT MANAGEMENT PROGRAM YEAR 2020

VARIOUS LOCATIONS

DATE - JULY 9, 2020

ITEM 860.104

4 INCH REFLECTORIZED WHITE LINE (PAINTED)

LUDLOW BID

ITEM C-10.1

CENTER STREET - Alden Street to 959 Center Street

11,900 FT X 2 EDGE LINES = 23,800 FT

CHAPIN STREET - Center Street to Holyoke Street

5,600 FT X 2 EDGE LINES = 11,200 FT

CADY STREET - Fuller Street to West Street

7,000 FT X 2 EDGE LINES = 14,000 FT

TOTAL 49,000 FT

ITEM 861.104

4 INCH REFLECTORIZED YELLOW (PAINTED)

LUDLOW BID

ITEM C-10.2

CENTER STREET - Alden Street to 959 Center Street

11,900 FT X 2 DOUBLE CENTERLINE = 23,800 FT

CHAPIN STREET - Center Street to Holyoke Street

5,600 FT X 2 DOUBLE CENTERLINE = 11,200 FT

CADY STREET - Fuller Street to West Street

7,000 FT X 2 DOUBLE CENTERLINE = 14,000 FT

TOTAL 49,000 FT

- PRELIMINARY ESTIMATE OF QUANTITIES - DETAIL SHEET -

TOWN-CITY LUDLOW PAVEMENT MANAGEMENT PROGRAM YEAR 2020

VARIOUS LOCATIONS

DATE - JULY 9, 2020

ITEM 864.041 **PAVEMENT ARROW STRAIGHT REFL. WHITE (THERMOPLASTIC)**

LUDLOW BID

ITEM C-10.14

CENTER STREET - East Street to Arch Street

Eastbound at East Street 1 EA

TOTAL 1 EA

ITEM 864.042 **PAVEMENT ARROW CURVED REFL. WHITE (THERMOPLASTIC)**

LUDLOW BID

ITEM C-10.16

RANDALL ROAD - at West Street

Eastbound Left Arrow 2 EA

Eastbound Right Arrow 2 EA

CENTER STREET - East Street to Arch Street

Northbound Left Arrow at West Avenue 2 EA

Southbound Right Arrow at East Street 1 EA

WEST AVENUE - at Center Street

Eastbound Right Arrow 1 EA

TOTAL 8 EA

ITEM 864.043 **PAVEMENT LEGEND REFL. WHITE (THERMOPLASTIC)**

LUDLOW BID

ITEM C-10.18

RANDALL ROAD - at West Street

Eastbound "ONLY" Before Left Arrow 2 EA

Eastbound "ONLY" Before Right Arrow 2 EA

WEST AVENUE - at Center Street

Eastbound "ONLY" Before Right Arrow 1 EA

TOTAL 5 EA

CHAPTER 90 CONTRACT # 50864

- PRELIMINARY ESTIMATE OF QUANTITIES - DETAIL SHEET -

TOWN-CITY LUDLOW PAVEMENT MANAGEMENT PROGRAM YEAR 2020

VARIOUS LOCATIONS

DATE - JULY 9, 2020

ITEM 866.104

4 INCH REFLECTORIZED WHITE LINE (THERMOPLASTIC)

LUDLOW BID

ITEM C-10.5

RANDALL ROAD - West Street to Power Lines

3,250 FT X 2 EDGE LINES = 6,500 FT

WINSOR STREET - East Street to Stevens Street

3,400 FT X 2 EDGE LINES = 6,800 FT

WARREN STREET - East Street to Winsor Street

600 FT X 2 EDGE LINES = 1,200 FT

CENTER STREET - East Street to Arch Street

3,000 FT X 2 EDGE LINES = 6,000 FT

CENTER STREET - Alden Street to Belchertown Town Line

8,200 FT X 2 EDGE LINES = 16,400 FT

CENTER STREET - Chapin Street to 959 Center Street

9,600 FT X 2 EDGE LINES = 19,200 FT

EAST STREET - Poole Street to Wilbraham Town Line

4,200 FT X 2 EDGE LINES = 8,400 FT

EAST STREET - Miller Street to Chapin Street

5,000 FT X 2 EDGE LINES = 10,000 FT

CHAPIN STREET - East Street to Center Street

3,500 FT X 2 EDGE LINES = 7,000 FT

SEWELL STREET - Center Street to Winsor Street

2,500 FT X 2 EDGE LINES = 5,000 FT

HOWARD STREET - Sewall Street to Oak Street

575 FT X 2 EDGE LINES = 1,150 FT

FULLER STREET - West Avenue to Rood Street

10,350 FT X 2 EDGE LINES = 20,700 FT

- PRELIMINARY ESTIMATE OF QUANTITIES - DETAIL SHEET -

TOWN-CITY LUDLOW PAVEMENT MANAGEMENT PROGRAM YEAR 2020VARIOUS LOCATIONS

DATE - JULY 9, 2020

ITEM 866.104 4 INCH REFLECTORIZED WHITE LINE (THERMOPLASTIC) (CONTINUED)

LUDLOW BID

ITEM C-10.5

ROOD STREET - Church Street to Fuller Street

1,575 FT X 2 EDGE LINES = 3,150 FT

CHURCH STREET - Center Street to Fuller Street

6,200 FT X 2 EDGE LINES = 12,400 FT

MILLER STREET - East Street to Center Street

8,700 FT X 2 EDGE LINES = 17,400 FT

TOTAL**141,300 FT****ITEM 866.112**

LUDLOW BID

ITEM C-10.8

& C-10.11

12 INCH REFLECTORIZED WHITE LINE (THERMOPLASTIC)RANDALL ROAD - West Street to Power Lines

STOP Bar at West Street = 34 FT

TURN Lane Divider at West Street = 100 FT

WINSOR STREET - East Street to Stevens Street

STOP Bar at East Street = 25 FT

CROSSWALK at East Street= 106 FT

CROSSWALK at Lusitano Club/Stadium= 74 FT

CROSSWALK at Newbury Street= 78 FT

STOP Bar at Stevens Street = 22 FT

NEWBURY STREET - at Winsor Street

CROSSWALK= 88 FT

LACONIA STREET - at Winsor Street

STOP Bar= 23 FT

WARREN STREET - East Street to Winsor Street

STOP Bar at East Street = 19 FT

CROSSWALK at East Street= 74 FT

STOP Bar at Winsor Street = 18 FT

CROSSWALK at Winsor Street= 78 FT

- PRELIMINARY ESTIMATE OF QUANTITIES - DETAIL SHEET -

TOWN-CITY LUDLOW PAVEMENT MANAGEMENT PROGRAM YEAR 2020

VARIOUS LOCATIONS

DATE - JULY 9, 2020

ITEM 866.112 **12 INCH REFLECTORIZED WHITE LINE (THERMOPLASTIC) (CONTINUED)**

LUDLOW BID

ITEM C-10.8

& C-10.11

CENTER STREET - East Street to Arch Street

STOP Bar at East Street =	12	FT
TURN Lane Divider at East Street =	130	FT
CROSSWALK at Arch Street=	64	FT

ARCH STREET - at Center Street

STOP Bar=	19	FT
CROSSWALK=	74	FT

WARSAW AVENUE - Center Street to Sewell Street

STOP Bar at Center Street=	17	FT
CROSSWALK at Center Street=	80	FT
STOP Bar at Sewell Street=	15	FT
CROSSWALK at Sewell Street=	76	FT

SEWELL STREET - Winsor Street to Center Street

CROSSWALK at Warsaw Avenue	66	FT
----------------------------	----	----

NOEL STREET - at Sewell Street

STOP Bar=	14	FT
CROSSWALK=	66	FT

BAKER STREET - at Sewell Street

STOP Bar=	13	FT
CROSSWALK=	60	FT

FULLER STREET - West Avenue to Rood Street

CROSSWALK at Cherry Street	94	FT
CROSSWALK at Water's Edge Condo	70	FT
CROSSWALK at Blisswood Village	88	FT
CROSSWALK at Blanchard Street	72	FT
CROSSWALKS at Chapin Street	188	FT
STOP Bars at Chapin Street=	62	FT

CADY STREET - at Fuller Street

STOP Bar=	24	FT
CROSSWALK=	136	

- PRELIMINARY ESTIMATE OF QUANTITIES - DETAIL SHEET -

TOWN-CITY LUDLOW PAVEMENT MANAGEMENT PROGRAM YEAR 2020

VARIOUS LOCATIONS

DATE - JULY 9, 2020

ITEM 866.112 **12 INCH REFLECTORIZED WHITE LINE (THERMOPLASTIC) (CONTINUED)**

LUDLOW BID

ITEM C-10.8
& C-10.11

CHURCH STREET - Center Street to Fuller Street

CROSSWALK at First Church 64 FT

STOP Bar at Center Street= 15 FT

TOTAL 2,258 FT

ITEM 867.104 **4 INCH REFLECTORIZED YELLOW (THERMOPLASTIC)**

LUDLOW BID

ITEM C-10.6

RANDALL ROAD - West Street to Power Lines

3,500 FT X 2 DOUBLE CENTERLINE = 6,500 FT

WINSOR STREET - East Street to Stevens Street

3,500 FT X 2 DOUBLE CENTERLINE = 6,800 FT

WARREN STREET - East Street to Winsor Street

3,500 FT X 2 DOUBLE CENTERLINE = 1,200 FT

CENTER STREET - East Street to Arch Street

3,000 FT X 2 DOUBLE CENTERLINE = 6,000 FT

CENTER STREET - Alden Street to Belchertown Town Line

8,200 FT X 2 DOUBLE CENTERLINE = 16,400 FT

CENTER STREET - Chapin Street to 959 Center Street

9,600 FT X 2 DOUBLE CENTERLINE = 19,200 FT

EAST STREET - Poole Street to Wilbraham Town Line

4,200 FT X 2 DOUBLE CENTERLINE = 8,400 FT

EAST STREET - Miller Street to Chapin Street

5,000 FT X 2 DOUBLE CENTERLINE = 10,000 FT

CHAPIN STREET - East Street to Center Street

3,500 FT X 2 DOUBLE CENTERLINE = 7,000 FT

CHAPTER 90 CONTRACT # 50864

- PRELIMINARY ESTIMATE OF QUANTITIES - DETAIL SHEET -

TOWN-CITY LUDLOW PAVEMENT MANAGEMENT PROGRAM YEAR 2020

VARIOUS LOCATIONS

DATE - JULY 9, 2020

ITEM 867.104 **4 INCH REFLECTORIZED YELLOW (THERMOPLASTIC) (CONTINUED)**

LUDLOW BID

ITEM C-10.6

SEWELL STREET - Center Street to Winsor Street

2,500 FT X 2 DOUBLE CENTERLINE = 5,000 FT

HOWARD STREET - Sewall Street to Oak Street

575 FT X 2 DOUBLE CENTERLINE = 1,150 FT

FULLER STREET - West Avenue to Rood Street

10,350 FT X 2 DOUBLE CENTERLINE = 20,700 FT

ROOD STREET - Church Street to Fuller Street

1,575 FT X 2 DOUBLE CENTERLINE = 3,150 FT

CHURCH STREET - Center Street to Fuller Street

6,200 FT X 2 DOUBLE CENTERLINE = 12,400 FT

MILLER STREET - East Street to Center Street

8,700 FT X 2 DOUBLE CENTERLINE = 17,400 FT

TOTAL **141,300 FT**

ITEM 867.112 **12 INCH REFLECTORIZED YELLOW LINE (THERMOPLASTIC)**

LUDLOW BID

ITEM C-10.8

& C-10.11

CENTER STREET - East Street to Arch Street

MEDIAN Bubble North of West Avenue= 220 FT

HASH Bars 45° Angle at West Avenue= 134 FT

TOTAL **354 FT**

CHAPTER 90 CONTRACT # 50864

- PRELIMINARY ESTIMATE OF QUANTITIES - DETAIL SHEET -

TOWN-CITY LUDLOW

PAVEMENT MANAGEMENT PROGRAM

YEAR 2020

VARIOUS LOCATIONS

DATE - JULY 9, 2020

ITEM 999.001

POLICE DETAIL

RANDALL ROAD - West Street to Power Lines

7.5 DAYS X 8 HR/DAY = 60 HR

PARKVIEW STREET - Chapin Street to Mountain View Street

3 DAYS X 8 HR/DAY = 24 HR

MOUNTAIN VIEW STREET - Parkview Street to Stevens Terrace

2 DAYS X 8 HR/DAY = 16 HR

WINSOR STREET - East Street to Stevens Street

19 DAYS X 8 HR/DAY = 152 HR

REYNOLDS STREET - Chapin Street to End

9 DAYS X 8 HR/DAY = 72 HR

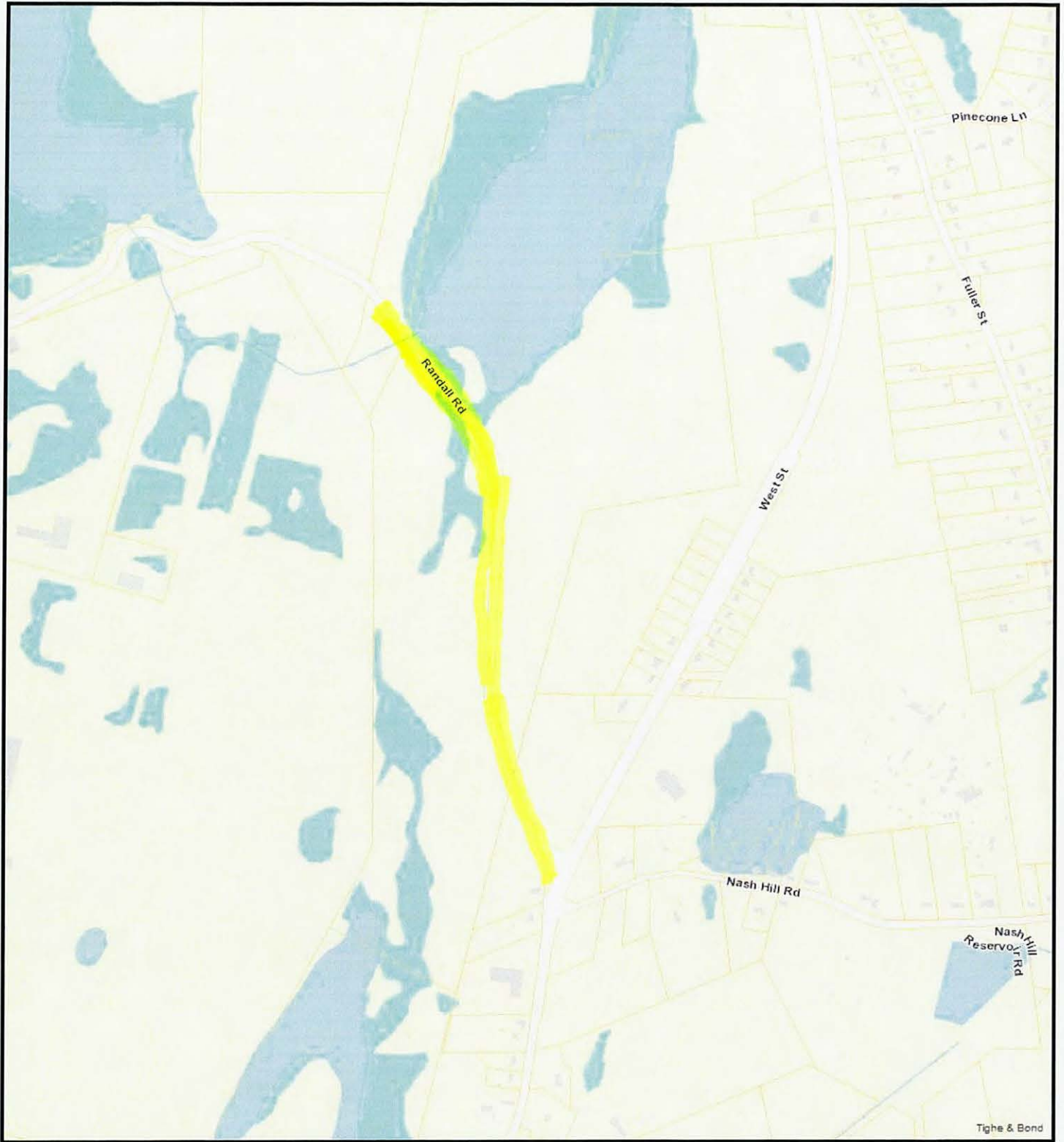
PONDVIEW DRIVE - Reynolds Street to Posner Circle

9 DAYS X 8 HR/DAY = 72 HR

WARREN STREET - East Street to Winsor Street

5 DAYS X 8 HR/DAY = 40 HR

TOTAL 436 HR



Mill-Overlay Randall Road

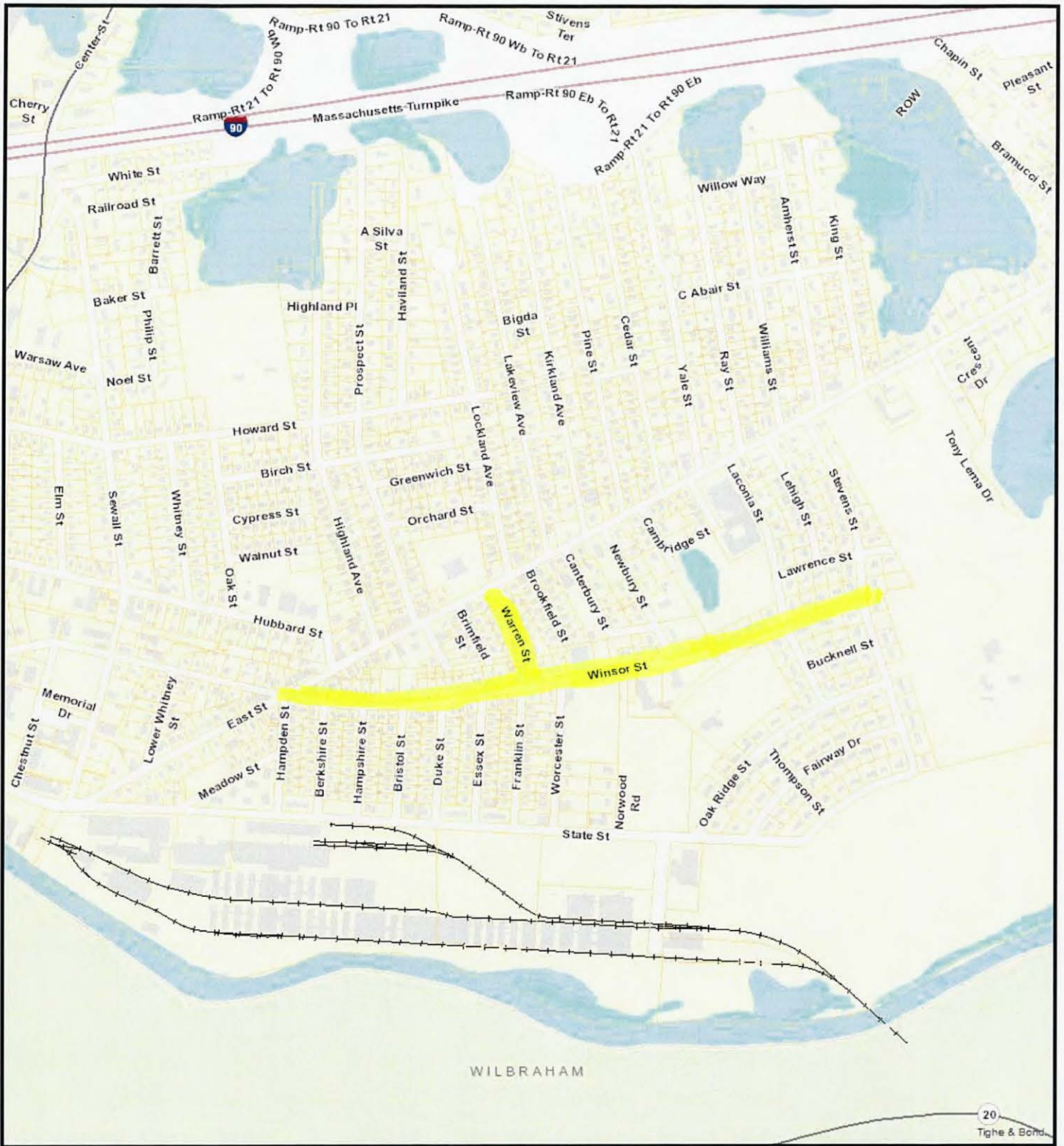
7/28/2020 9:38:26 PM

Scale: 1"=800'

Scale is approximate

The information depicted on this map is for planning purposes only. It is not adequate for legal boundary definition, regulatory interpretation, or parcel-level analyses.





Mill-Overlay Winsor/Warren

7/28/2020 9:49:32 PM

Scale: 1"=800'

Scale is approximate

The information depicted on this map is for planning purposes only. It is not adequate for legal boundary definition, regulatory interpretation, or parcel-level analyses.





Reclaim Parkview/Mt. View

7/28/2020 9:47:22 PM

Scale: 1"=400'

Scale is approximate

The information depicted on this map is for planning purposes only. It is not adequate for legal boundary definition, regulatory interpretation, or parcel-level analyses.





Reclaim Reynolds/Pondview

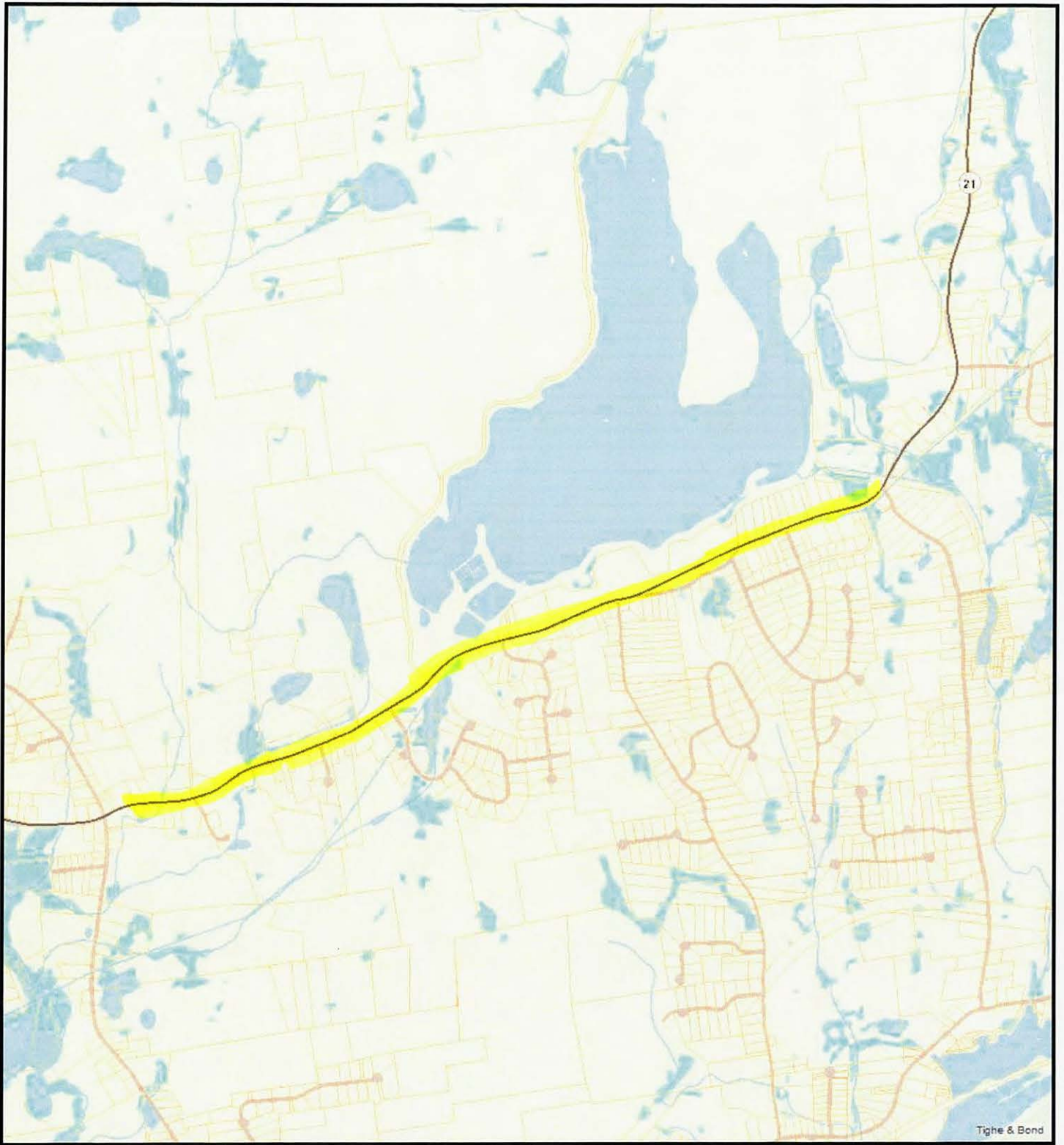
7/28/2020 9:43:53 PM

Scale: 1"=400'

Scale is approximate

The information depicted on this map is for planning purposes only. It is not adequate for legal boundary definition, regulatory interpretation, or parcel-level analyses.





Pavement Markings Center

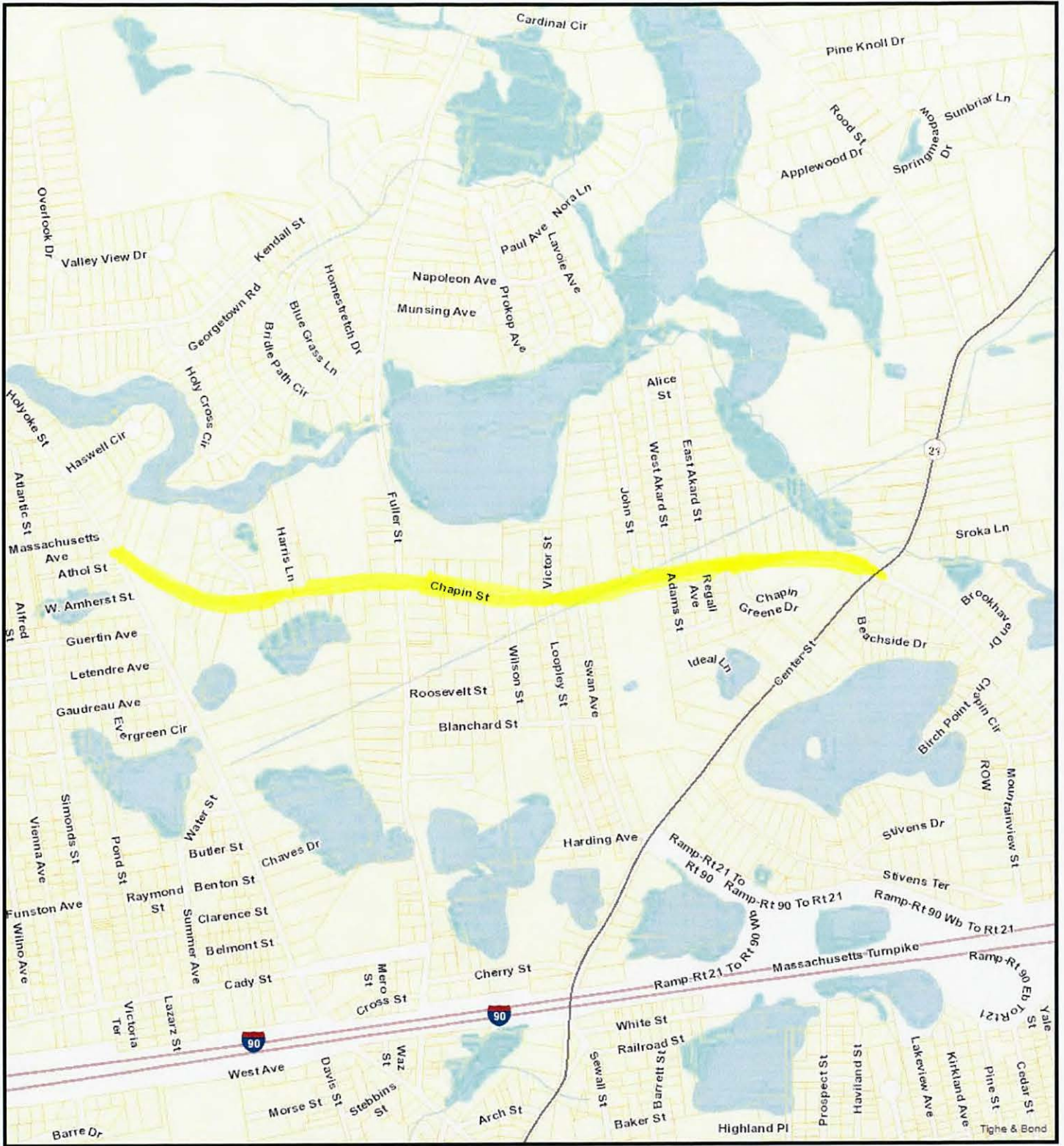
7/28/2020 10:05:23 PM

Scale: 1"=2000'

Scale is approximate

The information depicted on this map is for planning purposes only. It is not adequate for legal boundary definition, regulatory interpretation, or parcel-level analyses.





Pavement Markings Chapin

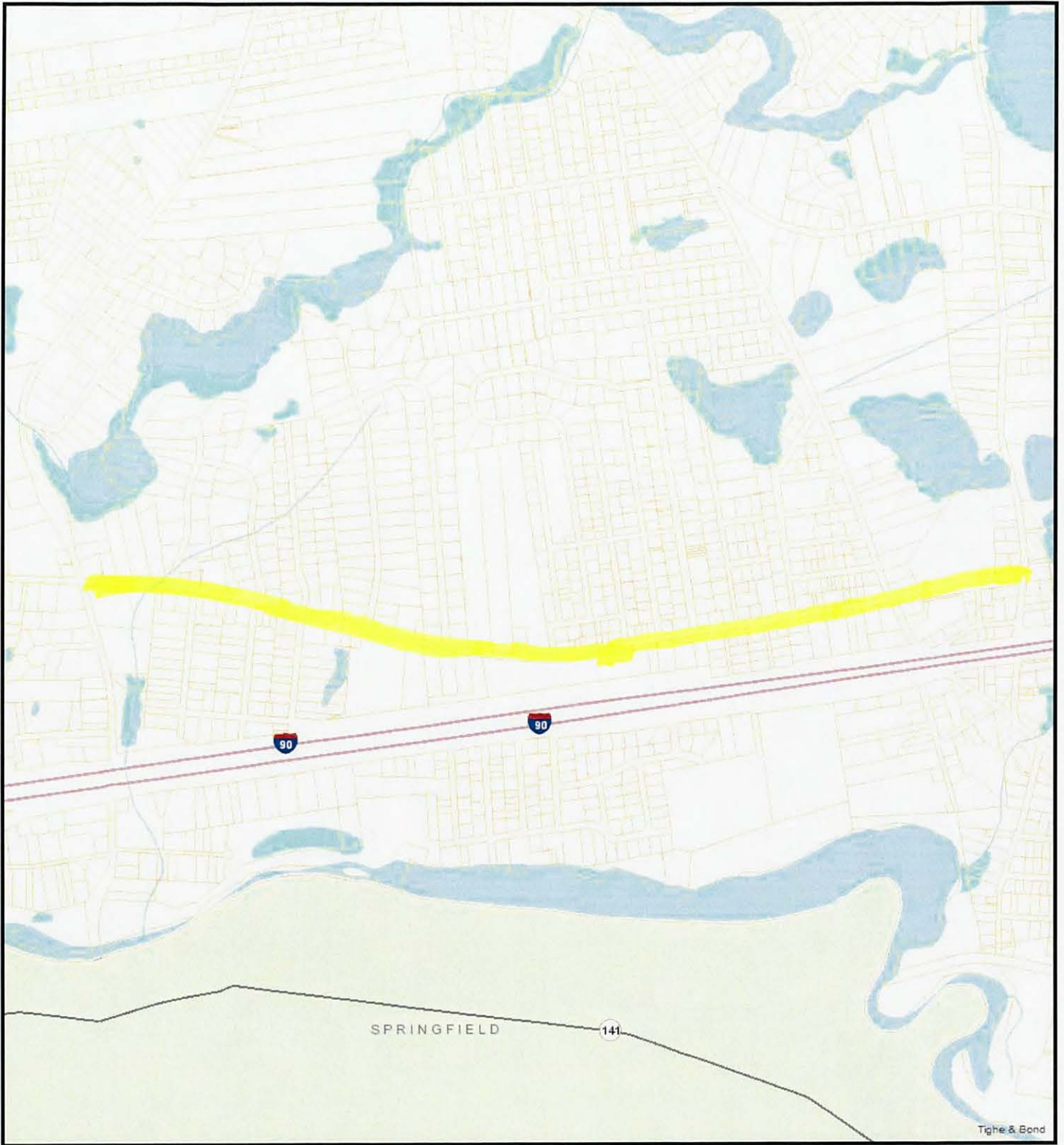
7/28/2020 10:09:01 PM

Scale: 1"=1000'

Scale is approximate

The information depicted on this map is for planning purposes only. It is not adequate for legal boundary definition, regulatory interpretation, or parcel-level analyses.





Pavement Markings Cady

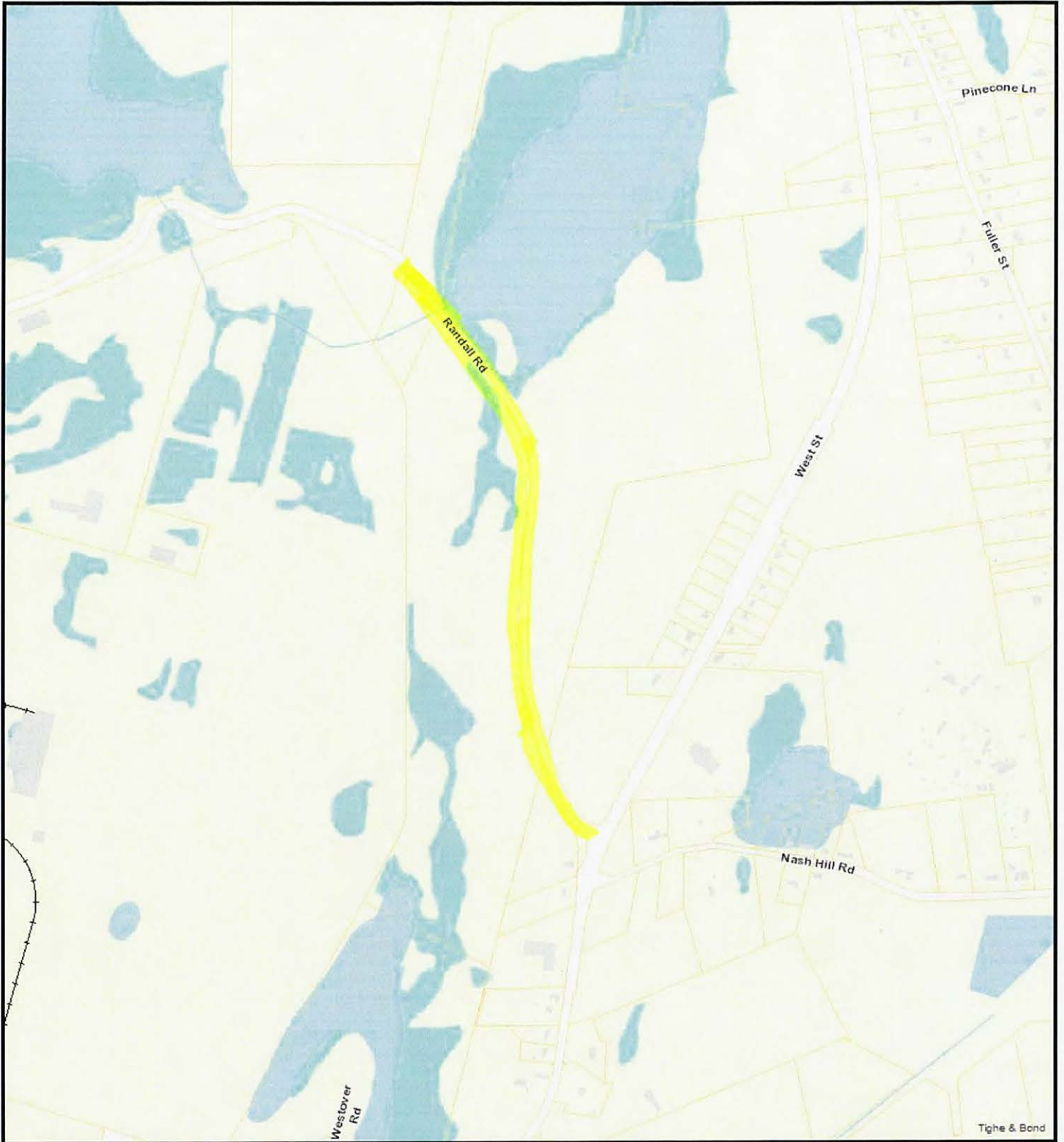
7/28/2020 10:11:05 PM

Scale: 1"=1000'

Scale is approximate

The information depicted on this map is for planning purposes only. It is not adequate for legal boundary definition, regulatory interpretation, or parcel-level analyses.





Pavement Markings Randall

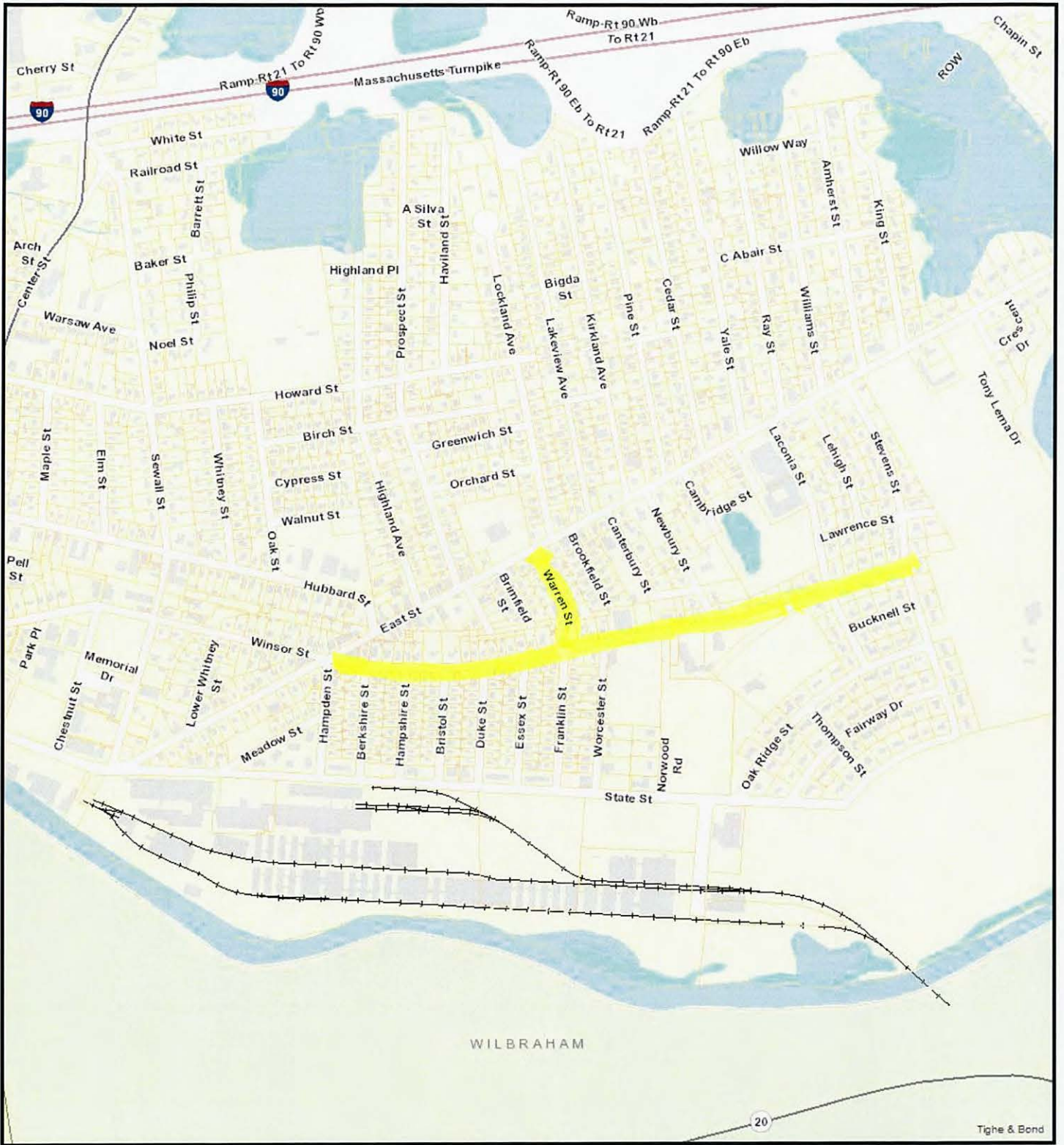
7/28/2020 10:15:02 PM

Scale: 1"=800'

Scale is approximate

The information depicted on this map is for planning purposes only. It is not adequate for legal boundary definition, regulatory interpretation, or parcel-level analyses.





Pavt Mrkngs Winsor/Warren

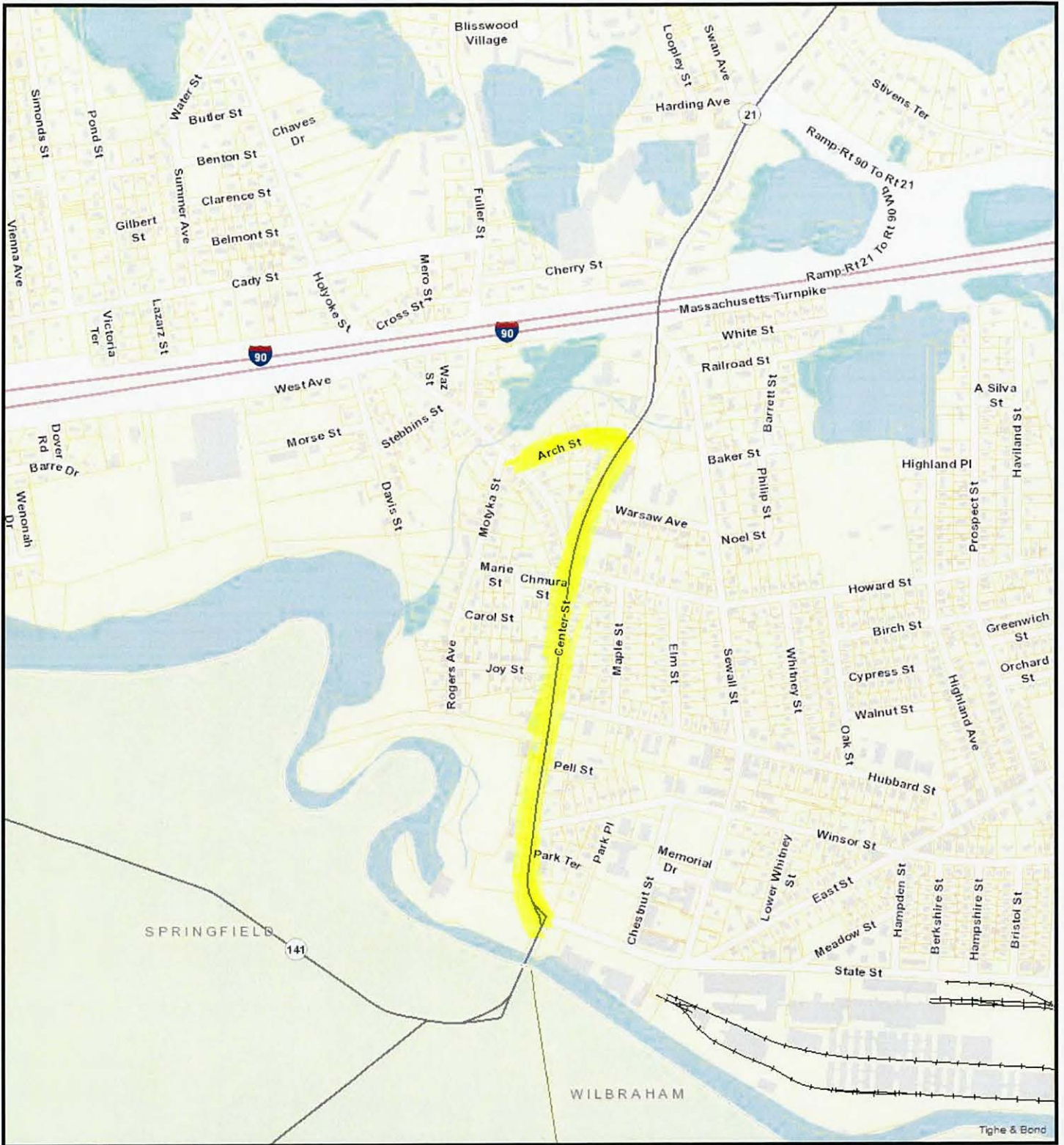
7/28/2020 10:18:58 PM

Scale: 1"=800'
Scale is approximate

The information depicted on this map is for planning purposes only. It is not adequate for legal boundary definition, regulatory interpretation, or parcel-level analyses.



Tighe & Bond



Pavt Mrkgs Center/Arch

7/28/2020 10:21:19 PM

Scale: 1"=800'

Scale is approximate

The information depicted on this map is for planning purposes only. It is not adequate for legal boundary definition, regulatory interpretation, or parcel-level analyses.



Tighe & Bond

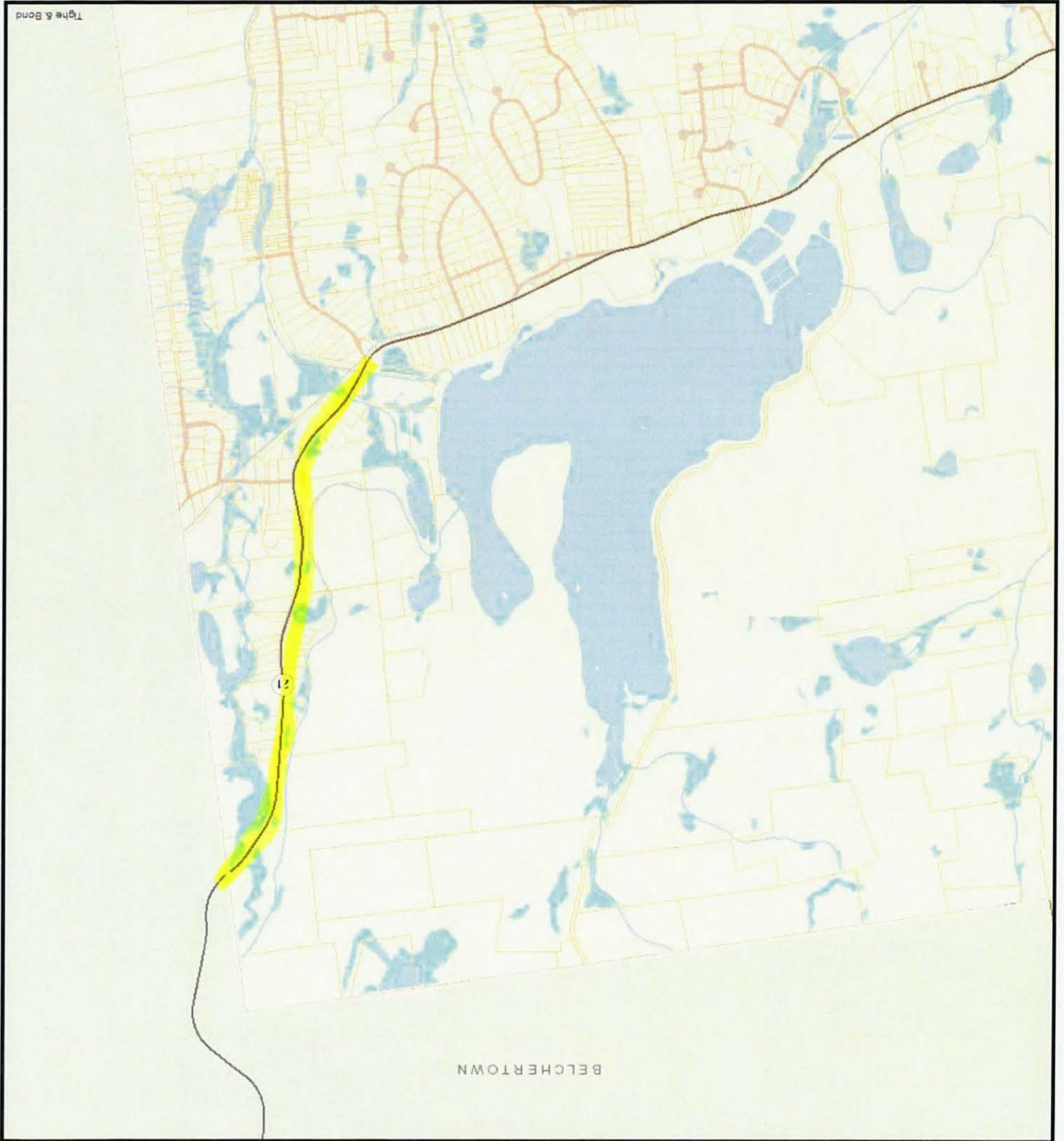
Pavement Markings Center

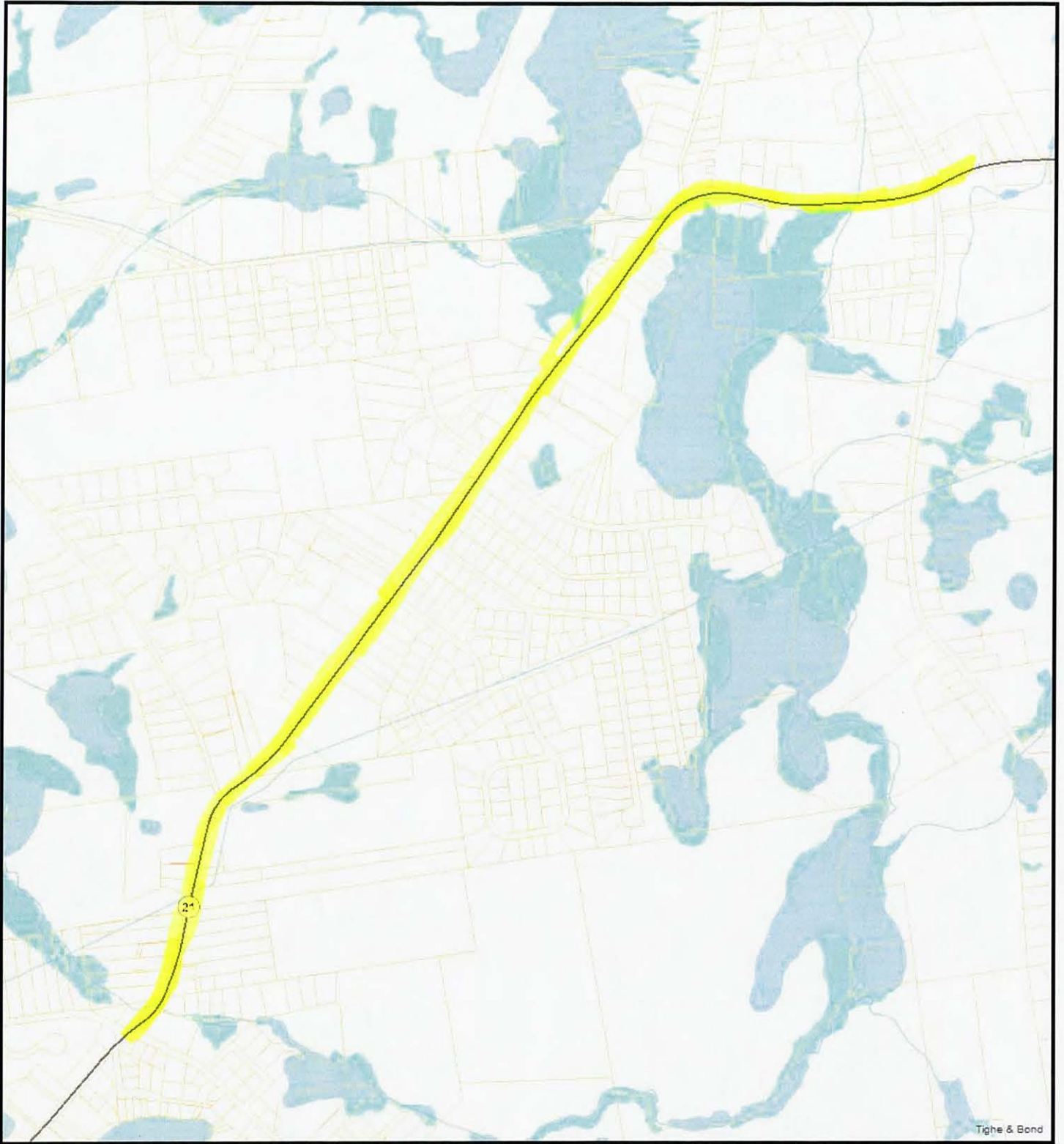
7/28/2020 10:07:10 PM

Scale: 1"=200'

Scale is approximate

The information depicted on this map is for planning purposes only. It is not adequate for legal boundary definition, regulatory interpretation, or parcel-level analyses.





Pavement Markings Center

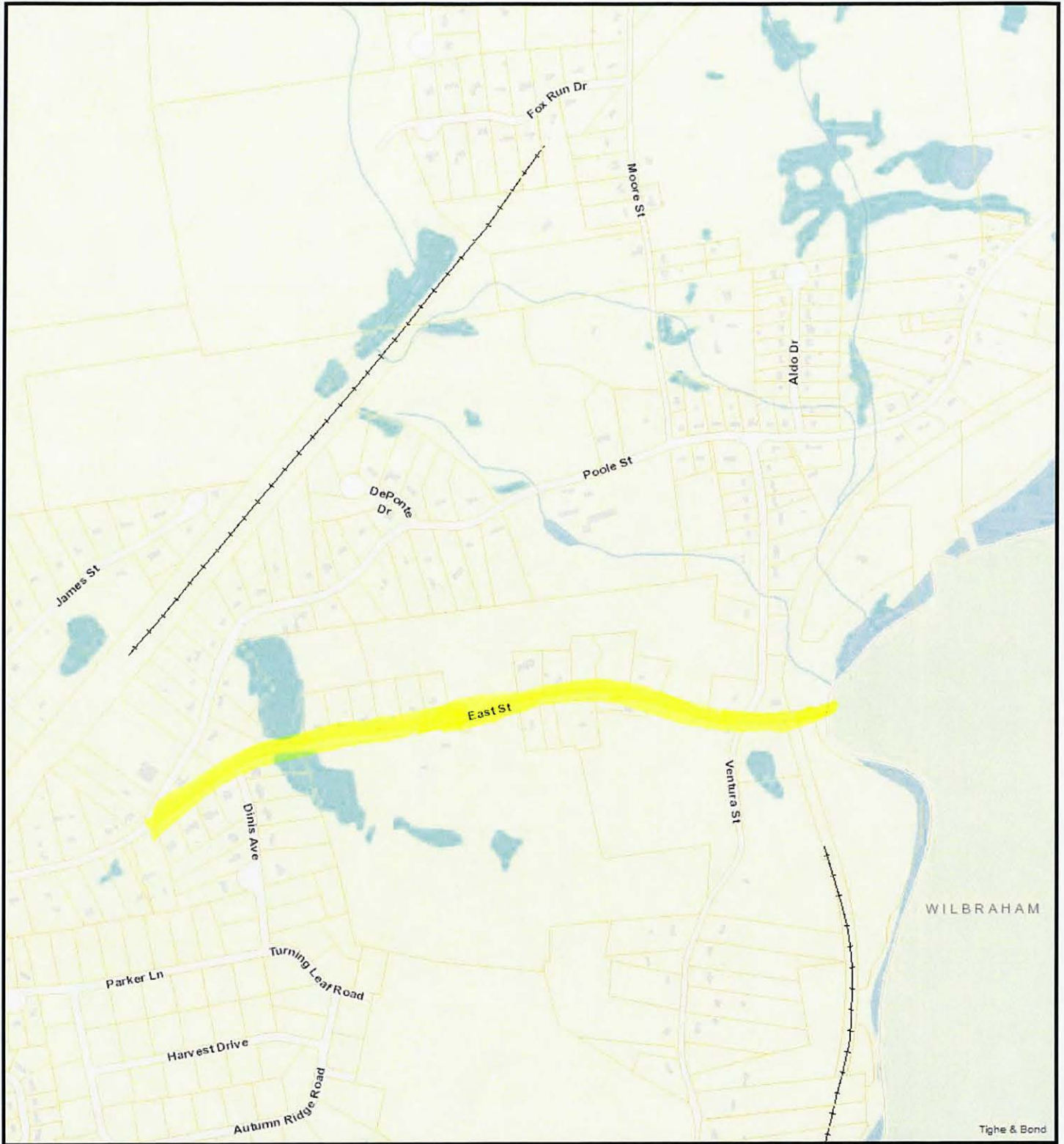
7/28/2020 10:24:57 PM

Scale: 1"=1000'

Scale is approximate

The information depicted on this map is for planning purposes only.
It is not adequate for legal boundary definition, regulatory
interpretation, or parcel-level analyses.





Pavement Markings East

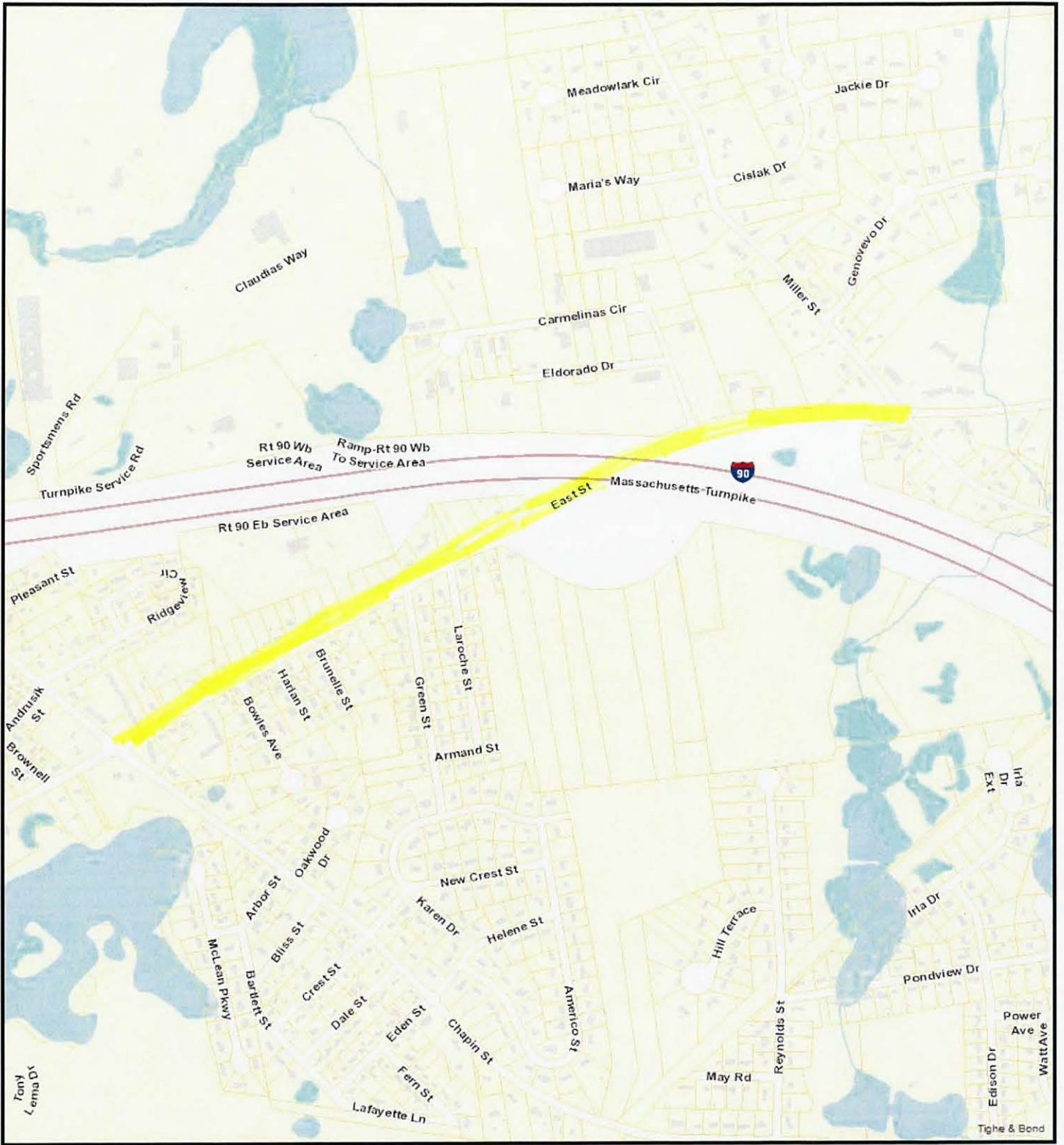
7/28/2020 10:42:26 PM

Scale: 1"=800'

Scale is approximate

The information depicted on this map is for planning purposes only. It is not adequate for legal boundary definition, regulatory interpretation, or parcel-level analyses.





Pavement Markings East

7/28/2020 10:44:32 PM

Scale: 1"=800'

Scale is approximate

The information depicted on this map is for planning purposes only. It is not adequate for legal boundary definition, regulatory interpretation, or parcel-level analyses.





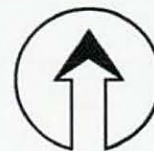
Pavement Markings Chapin

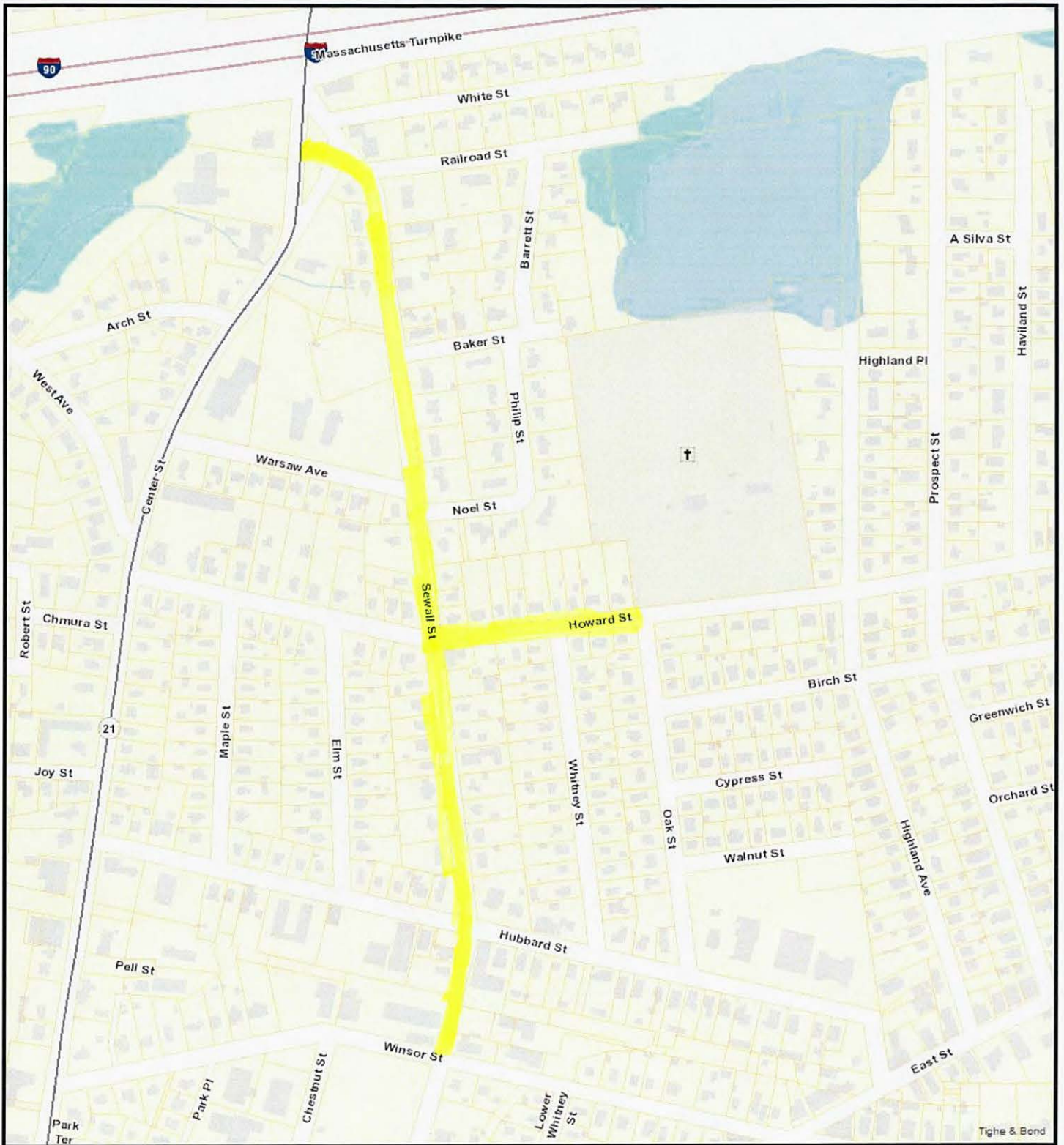
7/28/2020 10:45:46 PM

Scale: 1"=800'

Scale is approximate

The information depicted on this map is for planning purposes only. It is not adequate for legal boundary definition, regulatory interpretation, or parcel-level analyses.





Part Mrkngs Sewall/Howard

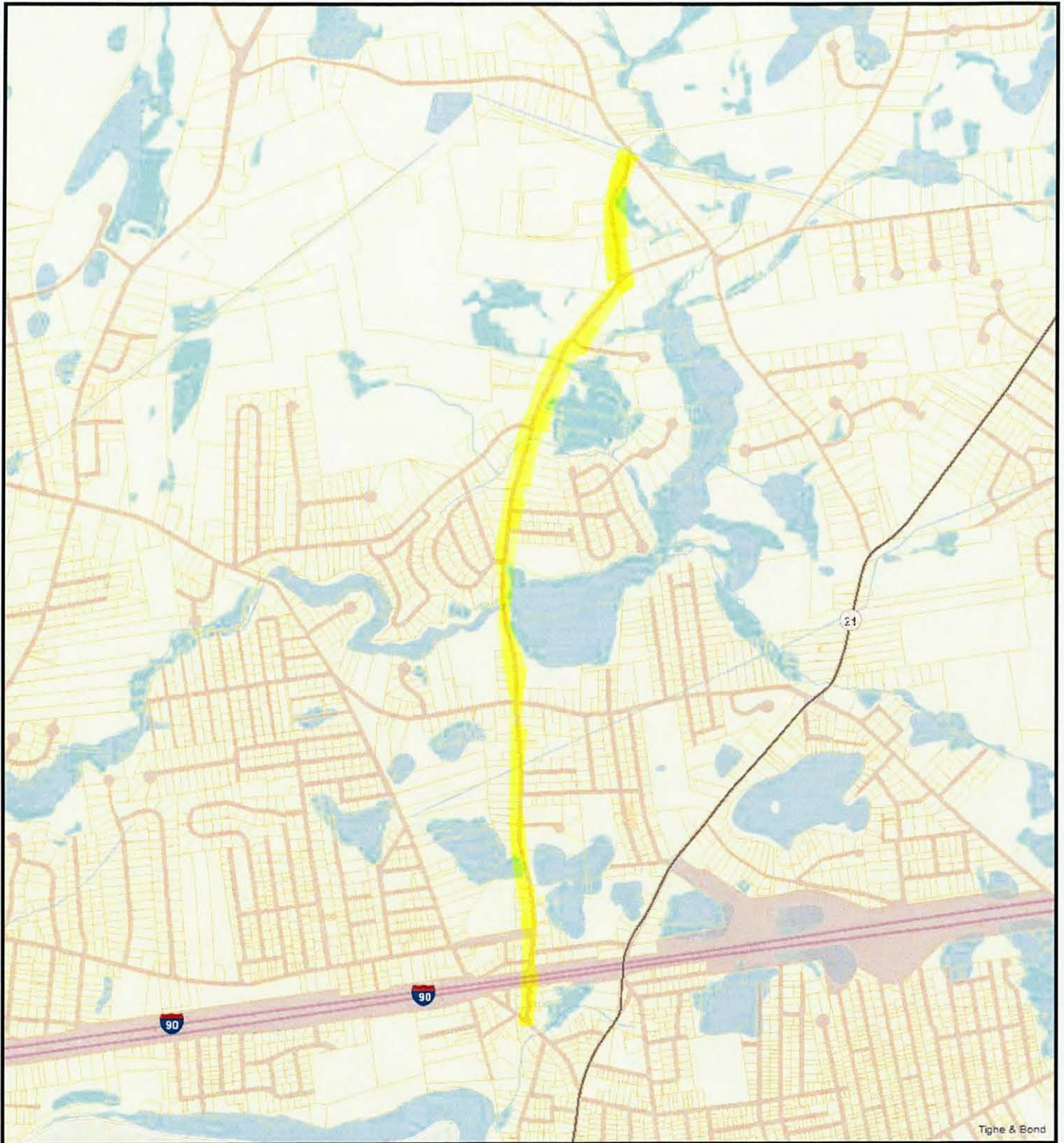
7/28/2020 10:57:31 PM

Scale: 1"=400'

Scale is approximate

The information depicted on this map is for planning purposes only. It is not adequate for legal boundary definition, regulatory interpretation, or parcel-level analyses.





Pavement Markings Fuller

7/28/2020 11:00:54 PM

Scale: 1"=1600'

Scale is approximate

The information depicted on this map is for planning purposes only. It is not adequate for legal boundary definition, regulatory interpretation, or parcel-level analyses.





TW
2/28

City / Town & Other Awarding Authority (OAA) Prequalification Form

Check All Funding Program(s) that apply:

- Chapter 90 Program
- Complete Streets Program
- Municipal Small Bridge Program
- Utility Grants Program
- Mass-Works Program
- Municipality Funds
- Other _____

Name of City/Town or OAA: LUDLOW

Description of Work: LUDLOW DPW 2020 RE-BID CERTAIN MATERIALS & SERVICES

Class of Work (determined by MassDOT Prequalification Committee): POST-BID Review to include 5 Lists

Pavement Surfacing Crack Sealing \$37,800

Pavement Markings \$164,845

Pavement Milling & Cold Planing \$108,400

Pavement Reclamation \$55,000

Pavement Surfacing \$528,375

Project Value: \$880,000

Bid Opening Date: 10:30 A.M. March 19, 2020

Award Date: March 31, 2020

Start Date: January 1, 2020

End Date: December 31, 2020

Contact Person: Michael Suprenant, PE Director of Public Works

Telephone #: (413) 583-5625

Email: msuprenant@ludlow.ma.us

Required Attachments:

- Legal Advertisement or Central Registry Advertisement
- Engineer's Bid Estimate Items, Quantities & Values / Alternates or Optional extensions (Total Prequal. Project Costs)
- Detailed Scope of Work
- State Funding Approval Form or Letter

Please email or fax completed forms to:
 Email: prequal.r109@dot.state.ma.us
 Fax: (857) 368-0643
 Main line: (857) 368-8660

For MassDOT Use Only

SAE Signature & Date

COPY
SAE

In accordance with M.G.L. c. 81, §8B, any Contractor or Prospective Bidder proposing to bid on any work, excepting the construction, reconstruction, repair, or alteration of buildings, to be awarded by the Department of Conservation and Recreation, aggregating \$50,000 or more, must be prequalified by the Highway Division of the Massachusetts Department of Transportation pursuant to 720 CMR 5.01, et seq. (cite 320 CMR 17.00, 17.02) in the specified class of work with a single contract class limit greater than or equal to the advertised project value.

Please notify MassDOT of any changes of contact information, bid dates, project value(s), addendums, etc.

Currently Prequalified Contractors in the following class(es) of work:

Crack Sealing

With a minimum MassDOT Single Class of Work Limit of: **\$37,800.00**

Company	Expiration Date
ANNSEAL INC	07/31/2021
DBI SERVICES LLC	09/30/2020
J F WHITE CONTRACTING CO	12/31/2020
JJ CUNNINGHAM LLC	05/31/2021
PENHALL COMPANY	03/31/2021
R & S LANDSCAPING CO INC	07/31/2020
SEALCOATING INC	01/31/2021
SUPERIOR SEALCOAT INC	07/31/2020
SWANK CONSTRUCTION COMPANY LLC	03/31/2021
THE GORMAN GROUP LLC	08/31/2020

Currently Prequalified Contractors in the following class(es) of work:

Pavement Markings

With a minimum MassDOT Single Class of Work Limit of: **\$164,845.00**

Company	Expiration Date
DEANGELO BROTHERS LLC	07/31/2020
FELIX A MARINO CO INC	07/31/2021
JJ CUNNINGHAM LLC	05/31/2021
K5 CORPORATION	07/31/2021
LIDDELL BROTHERS INC	07/31/2020
MARKINGS INC	11/30/2020
ROADSAFE TRAFFIC SYSTEMS INC	04/30/2021
TMI SERVICES INC	07/31/2021

Currently Prequalified Contractors in the following class(es) of work:

Pavement - Milling And Cold Planing

With a minimum MassDOT Single Class of Work Limit of:

\$108,400.00

Company	Expiration Date
AGGREGATE INDUSTRIES NE REGION INC	06/30/2021
ALBANESE BROTHERS INC	02/28/2021
ALBANESE D & S,INC.	04/30/2021
ALL STATES ASPHALT INC	02/28/2021
ATLANTIC PAVING CORP	05/31/2021
B&W PAVING AND LANDSCAPING LLC	10/31/2020
BALTAZAR CONTRACTORS INC	10/31/2020
BEVILACQUA PAVING CORP	04/30/2021
BISZKO CONTRACTING CORP	07/31/2020
BROX INDUSTRIES	12/31/2020
CASSIDY CORP.	05/31/2021
CJP & SONS CONSTRUCTION CO INC	02/28/2021
D A COLLINS CONSTRUCTION CO IN	05/31/2021
DONEGAL CONSTRUCTION CORPORATION	03/31/2021
E J PAVING CO INC	11/30/2020
ELLINGWOOD CONSTRUCTION INC	06/30/2021
EUROVIA ATLANTIC COAST LLC	05/31/2021
GARRITY ASPHALT RECLAIMING INC	04/30/2021
GMI ASPHALT LLC	01/31/2021
GRANITE CONSTRUCTION COMPANY	07/31/2020
HARSHAW PAVING & RECLAMATION CORP	07/31/2020
J H MAXYMILLIAN INC	05/31/2021
JPB CONSTRUCTION CO INC	12/31/2020
L B CORPORATION	04/30/2021
LAWRENCE LYNCH CORP	07/31/2020
LAZARO PAVING CORP	01/31/2021
LORUSSO CORPORATION	07/31/2021
MARIO SUSI & SON INC	06/30/2021
MASSACHUSETTS BROKEN STONE COMPANY	04/30/2021
MATHIAS CORPORATION	02/28/2021
NEWPORT CONSTRUCTION CORP	05/31/2021

City/Town/Awarding Authorities Prequalified Contractors

Company	Expiration Date
P J ALBERT INC	09/30/2020
PALMER PAVING CORP	08/31/2020
PAVEX, INC.	07/31/2021
PAWTUCKET HOT MIX ASPHALT INC	07/31/2020
PECKHAM ROAD CORPORATION	06/30/2021
PJ KEATING COMPANY	04/30/2021
RAFFERTY FINE GRADING INC	02/28/2021
REVOLI CONSTRUCTION CO., INC.	04/30/2021
RIFENBURG CONSTRUCTION INC	09/30/2020
RJV CONSTRUCTION CORPORATION	05/31/2021
ROCHESTER BITUMINOUS PRODUCTS	02/28/2021
SEALCOATING INC	01/31/2021
SWANK CONSTRUCTION COMPANY LLC	03/31/2021
T L EDWARDS INC	08/31/2020
T MIOZZI INC	11/30/2020
THE GORMAN GROUP LLC	08/31/2020
THE MIDDLESEX CORP	06/30/2021
TREAD MILLING CO., INC.	04/30/2021
WALSH CONTRACTING CORP	01/31/2021

Currently Prequalified Contractors in the following class(es) of work:

Pavement - Reclamation

With a minimum MassDOT Single Class of Work Limit of: **\$55,000.00**

Company	Expiration Date
A F AMORELLO & SONS INC	04/30/2021
ALBANESE BROTHERS INC	02/28/2021
ALBANESE D & S, INC.	04/30/2021
ALL STATES ASPHALT INC	02/28/2021
B&W PAVING AND LANDSCAPING LLC	10/31/2020
BALTAZAR CONTRACTORS INC	10/31/2020
BELL & FLYNN INC	05/31/2021
BEVILACQUA PAVING CORP	04/30/2021
BISZKO CONTRACTING CORP	07/31/2020
BUSBY CONSTRUCTION CO INC	05/31/2021
CARACAS CONSTRUCTION CORP	09/30/2020
CJP & SONS CONSTRUCTION CO INC	02/28/2021
D W WHITE CONSTRUCTION INC	02/28/2021
E J PAVING CO INC	11/30/2020
GARRITY ASPHALT RECLAIMING INC	04/30/2021
GMI ASPHALT LLC	01/31/2021
HIGHWAY REHABILITATION CORP	08/31/2020
J H MAXYMILLIAN INC	05/31/2021
J TROPEANO INC	08/31/2020
JAMCO EXCAVATORS LLC	10/31/2020
LAZARO PAVING CORP	01/31/2021
MASS PAVEMENT RECLAMATION INC	06/30/2021
MATHIAS CORPORATION	02/28/2021
MURRAY PAVING & RECLAMATION IN	12/31/2020
NEWPORT CONSTRUCTION CORP	05/31/2021
NOCELLA LANDSCAPING & PAVING	03/31/2021
OLIMPIA INDUSTRIES	12/31/2020
P J ALBERT INC	09/30/2020
PALMER PAVING CORP	08/31/2020
PAVEX, INC.	07/31/2021
PAWTUCKET HOT MIX ASPHALT INC	07/31/2020

City/Town/Awarding Authorities Prequalified Contractors

Company	Expiration Date
PECKHAM ROAD CORPORATION	06/30/2021
PIOPPI CONSTRUCTION INC	07/31/2021
PJ KEATING COMPANY	04/30/2021
RAFFERTY FINE GRADING INC	02/28/2021
REVOLI CONSTRUCTION CO., INC.	04/30/2021
RICCIARDI BROS INC	09/30/2020
RIFENBURG CONSTRUCTION INC	09/30/2020
RJV CONSTRUCTION CORPORATION	05/31/2021
ROBERT B OUR CO INC	01/31/2021
SUNSHINE PAVING CORPORATION	05/31/2021
T L EDWARDS INC	08/31/2020
THE GORMAN GROUP LLC	08/31/2020
WALSH CONTRACTING CORP	01/31/2021

Currently Prequalified Contractors in the following class(es) of work:

Pavement - Surfacing

With a minimum MassDOT Single Class of Work Limit of: **\$528,375.00**

Company	Expiration Date
A F AMORELLO & SONS INC	04/30/2021
A R BELLI INC	07/31/2021
AGGREGATE INDUSTRIES NE REGION INC	06/30/2021
ALBANESE BROTHERS INC	02/28/2021
ALL STATES ASPHALT INC	02/28/2021
ALLIED PAVING CORP	10/31/2020
ALTON E GLEASON CO. INC.	04/30/2021
ATLANTIC PAVING CORP	05/31/2021
B&W PAVING AND LANDSCAPING LLC	10/31/2020
BELL & FLYNN INC	05/31/2021
BENEVENTO ASPHALT CORP	07/31/2020
BEVILACQUA PAVING CORP	04/30/2021
BISZKO CONTRACTING CORP	07/31/2020
BITCON CORP	08/31/2020
BROX INDUSTRIES	12/31/2020
CASSIDY CORP.	05/31/2021
CENTURY PAVING & CONST CORP	09/30/2020
D A COLLINS CONSTRUCTION CO IN	05/31/2021
D W WHITE CONSTRUCTION INC	02/28/2021
D&R GENERAL CONTRACTING	07/31/2020
D'AMBRA CONSTRUCTION COMPANY INC	07/31/2020
DALLESSANDRO CORP	12/31/2020
DEANGELO BROTHERS LLC	07/31/2020
DEFELICE CORPORATION	06/30/2021
DELSIGNORE BLACKTOP PAVING INC	07/31/2020
E H PERKINS CONSTRUCTION INC	08/31/2020
E J PAVING CO INC	11/30/2020
ELLINGWOOD CONSTRUCTION INC	06/30/2021
EUROVIA ATLANTIC COAST LLC	05/31/2021
GMI ASPHALT LLC	01/31/2021
HALMAR INTERNATIONAL	07/31/2021

City/Town/Awarding Authorities Prequalified Contractors

Company	Expiration Date
HARSHAW PAVING & RECLAMATION CORP	07/31/2020
HERZOG CONTRACTING CORP	06/30/2021
HIGHWAY REHABILITATION CORP	08/31/2020
HMA CONTRACTING CORP	07/31/2020
I W HARDING CONST CO INC	02/28/2021
J A POLITO & SON INC	05/31/2021
J H LYNCH & SONS INC	07/31/2020
J H MAXYMILLIAN INC	05/31/2021
JAMCO EXCAVATORS LLC	10/31/2020
JOSEPH P CARDILLO& SON INC	08/31/2020
JSL ASPHALT INC	08/31/2020
JW DUBIS & SONS INC	05/31/2021
L B CORPORATION	04/30/2021
LAL CONSTRUCTION CO INC	08/31/2020
LAWRENCE LYNCH CORP	07/31/2020
LAZARO PAVING CORP	01/31/2021
LORUSSO CORPORATION	07/31/2021
M.C.E. DIRTWORKS INC	07/31/2020
MANAFORT BROTHERS INC	05/31/2021
MARIO SUSI & SON INC	06/30/2021
MARION EXCAVATING CO, INC.	10/31/2020
MASSACHUSETTS BROKEN STONE COMPANY	04/30/2021
MATHIAS CORPORATION	02/28/2021
METRO EQUIPMENT CORP	06/30/2021
MURRAY PAVING & RECLAMATION IN	12/31/2020
NARRAGANSETT IMPROVEMENT COMPA	07/31/2021
NEWPORT CONSTRUCTION CORP	05/31/2021
NOCELLA LANDSCAPING & PAVING	03/31/2021
P A LANDERS INC	03/31/2021
P J ALBERT INC	09/30/2020
PACELLA ENTERPRISES INC	03/31/2021
PALMER PAVING CORP	08/31/2020
PENHALL COMPANY	03/31/2021
PIOPPI CONSTRUCTION INC	07/31/2021
PJ KEATING COMPANY	04/30/2021

City/Town/Awarding Authorities Prequalified Contractors

Company	Expiration Date
PRECISE PAVING INC.	01/31/2021
R A POWELL CONSTRUCTION CORP	04/30/2021
REVOLI CONSTRUCTION CO., INC.	04/30/2021
RIFENBURG CONSTRUCTION INC	09/30/2020
RIFENBURG CONTRACTING CORPORATION	10/31/2020
RJV CONSTRUCTION CORPORATION	05/31/2021
ROCHESTER BITUMINOUS PRODUCTS	02/28/2021
SEALCOATING INC	01/31/2021
SUNSHINE PAVING CORPORATION	05/31/2021
SUPERIOR SEALCOAT INC	07/31/2020
T L EDWARDS INC	08/31/2020
T MIOZZI INC	11/30/2020
TASCO CONSTRUCTION INC	01/31/2021
THE GORMAN GROUP LLC	08/31/2020
THE MIDDLESEX CORP	06/30/2021
TRI TOWN PAVING INC	11/30/2020
VICTOR-BRANDON CORP	11/30/2020
WALSH CONTRACTING CORP	01/31/2021
WARNER BROS LLC	08/31/2020



City/Town or Other Awarding Authority Prequalification Confirmation

Apparent 3 Lowest Bidders Form

Approved Funding Program(s):

- Chapter 90 Program
 Complete Streets Program
 Municipal Small Bridge Program
 Utility Grants Program
 Mass-Works Program
 Municipality Funds
 Other _____

City / Town or Other Awarding Authority LUDLOW - Board of Public Works

Location: 2020 Annual ReBid - Various Streets

Description: 2020 Pavement Management Program

Proposed Work: (See Attached 2020 Pavement Management Program Summary)

Class of Work: Crack Sealing

Bid Opening Date: 03-19-2020

Project Value: \$ 37,800

Contractor	Address	City	State/Zip	Total Bid	Rank
Indus (Sealcoating, Inc.)	825 Granite Street	Braintree	MA 02184	\$ 43,092.00	1

Signature of person completing form: *Michael G. Suprenant*

Print name: Sign Michael G. Suprenant, PE Director of Public Works/Town Engineer Date 07-14-2020

Comments: _____

MASSDOT PREQUAL. OFFICE USE ONLY

All Bidders Prequalified: Yes / No

Reviewed by: TW

Tracking System Input:

Copied District SAE / Funding Program Manager(s)

Close File: ADP Date 7/16/20

Comments: COPY SAE & OAA



City/Town or Other Awarding Authority Prequalification Confirmation

Apparent 3 Lowest Bidders Form

Approved Funding Program(s):

- Chapter 90 Program Complete Streets Program Municipal Small Bridge Program
 Utility Grants Program Mass-Works Program Municipality Funds
 Other _____

City / Town or Other Awarding Authority LUDLOW - Board of Public Works

Location: 2020 Annual ReBid - Various Streets

Description: 2020 Pavement Management Program

Proposed Work: (See Attached 2020 Pavement Management Program Summary)

Class of Work: Pavement - Markings

Bid Opening Date: 03-19-2020 Project Value: \$ 164,845

Contractor	Address	City	State/Zip	Total Bid	Rank
Markings, Inc.	30 Riverside Drive	Pembroke	MA 02359	\$ 158,855.00	1

Signature of person completing form: *Michael G. Suprenant*
 Sign Michael G. Suprenant, PE Director of Public Works/Town Engineer Date 07-14-2020

Print name: _____

Comments: _____

MASSDOT PREQUAL. OFFICE USE ONLY

All Bidders Prequalified: Yes / No Reviewed by: TW Tracking System Input:

Copied District SAE / Funding Program Manager(s) Close File: ADP Date 7/16/20

Comments: COPY SAE & OAA



City/Town or Other Awarding Authority Prequalification Confirmation

Apparent 3 Lowest Bidders Form

Approved Funding Program(s):

- Chapter 90 Program
 Complete Streets Program
 Municipal Small Bridge Program
 Utility Grants Program
 Mass-Works Program
 Municipality Funds
 Other _____

City / Town or Other Awarding Authority LUDLOW - Board of Public Works

Location: 2020 Annual ReBid - Various Streets

Description: 2020 Pavement Management Program

Proposed Work: (See Attached 2020 Pavement Management Program Summary)

Class of Work: Pavement - Milling and Cold Planing

Bid Opening Date: 03-19-2020

Project Value: \$ 108,400

Contractor	Address	City	State/Zip	Total Bid	Rank
Palmer Paving Corporation	25 Blanchard Street	Palmer	MA 01069	\$ 102,968.00	1
Garrity Asphalt Reclaiming, Inc.	22 Peters Road	Bloomfield	CT 06002	\$ 183,400.00	2

Signature of person completing form: *Michael G. Suprenant*
 Sign: Michael G. Suprenant, PE Director of Public Works/Town Engineer Date 07-14-2020

Print name: _____

Comments: _____

MASSDOT PREQUAL. OFFICE USE ONLY

All Bidders Prequalified: Yes / No

Reviewed by: TW

Tracking System Input:

Copied District SAE / Funding Program Manager(s)

Close File: ADP Date 7/16/20

Comments: COPY SAE & OAA



City/Town or Other Awarding Authority Prequalification Confirmation

Apparent 3 Lowest Bidders Form

Approved Funding Program(s):

- Chapter 90 Program
 Complete Streets Program
 Municipal Small Bridge Program
 Utility Grants Program
 Mass-Works Program
 Municipality Funds
 Other _____

City / Town or Other Awarding Authority LUDLOW - Board of Public Works

Location: 2020 Annual ReBid - Various Streets

Description: 2020 Pavement Management Program

Proposed Work: (See Attached 2020 Pavement Management Program Summary)

Class of Work: Pavement - Reclamation

Bid Opening Date: 03-19-2020 Project Value: \$ 55,000

Contractor	Address	City	State/Zip	Total Bid	Rank
Murray Paving & Reclamation	55 Whitney Street	Holliston	MA 01746	\$ 53,000.00	1
All States Asphalt, Inc.	PO Box 91	Sunderland	MA 01375	\$ 77,000.00	2
Garrity Asphalt Reclaiming, Inc.	22 Peters Road	Bloomfield	CT 06002	\$ 110,000.00	3

Signature of person completing form: *Michael G. Suprenant*

Sign Michael G. Suprenant, PE Director of Public Works/Town Engineer Date 07-14-2020

Print name: _____

Comments: _____

MASSDOT PREQUAL. OFFICE USE ONLY

All Bidders Prequalified: Yes / No

Reviewed by: TW

Tracking System Input:

Copied District SAE / Funding Program Manager(s)

Close File: ADP Date 7/16/20

Comments: COPY SAE & OAA



City/Town or Other Awarding Authority Prequalification Confirmation

Apparent 3 Lowest Bidders Form

Approved Funding Program(s):

- Chapter 90 Program
 Complete Streets Program
 Municipal Small Bridge Program
 Utility Grants Program
 Mass-Works Program
 Municipality Funds
 Other _____

City / Town or Other Awarding Authority LUDLOW - Board of Public Works

Location: 2020 Annual ReBid - Various Streets

Description: 2020 Pavement Management Program

Proposed Work: (See Attached 2020 Pavement Management Program Summary)

Class of Work: Pavement - Surfacing

Bid Opening Date: 03-19-2020 Project Value: \$ 528,375

Contractor	Address	City	State/Zip	Total Bid	Rank
Palmer Paving Corporation	25 Blanchard Street	Palmer	MA 01069	\$ 522,175.00	1

Signature of person completing form: *Michael G. Suprenant*
 Sign Michael G. Suprenant, PE Director of Public Works/Town Engineer Date 07-14-2020

Print name: _____

Comments: _____

MASSDOT PREQUAL. OFFICE USE ONLY

All Bidders Prequalified: Yes / No

Reviewed by: TW

Tracking System Input:

Copied District SAE / Funding Program Manager(s)

Close File: ADP Date 7/16/20

Comments: COPY SAE & OAA



CHAPTER 90 SUMMARY OF BIDS

City/Town: LUDLOW

Date: 03-19-2020

Material to be used for: Resurfacing, Grading & Drainage

Bidder Name	Bidder Address	Material	Approx Quantity	Bid Unit	Price At Plant	Delivered	Plant Location or Source of Supply	Contract Awarded To
Palmer Paving	Blanchard Street Palmer, MA	Type I HMA	6,000	TON	\$66.00	\$64.70	Palmer & Springfield	Palmer Paving
Ginmar Ent.	Carmelinas Circle Ludlow	Screened Gravel	50	CY	\$12.75	\$15.00	Carmelinas Circle Ludlow	Ginmar Enterprises
Ray Haluch	Center Street Ludlow				\$14.00	\$18.00	Center Street Ludlow	
Ginmar Ent.	Carmelinas Circle Ludlow	Processed Gravel	50	CY	\$12.75	\$15.00	Carmelinas Circle Ludlow	Ginmar Enterprises
Ray Haluch	Center Street Ludlow				\$14.00	\$18.00	Center Street Ludlow	
Ginmar Ent.	Carmelinas Circle Ludlow	6" Rip Rap	50	CY	\$21.00	\$24.00	Carmelinas Circle Ludlow	Ginmar Enterprises
Ginmar Ent.	Carmelinas Circle Ludlow	3/4" Dense Gr	50	CY	\$17.00	\$19.00	Carmelinas Circle Ludlow	Ginmar Enterprises
Ginmar Ent.	Carmelinas Circle Ludlow	Ordinary Borrow	50	CY	\$7.00	\$9.00	Carmelinas Circle Ludlow	Ginmar Enterprises
Ray Haluch	Center Street Ludlow				\$7.00	\$11.00	Center Street Ludlow	
Ginmar Ent.	Carmelinas Circle Ludlow	Winter Sand	3,000	CY		\$14.75	Carmelinas Circle Ludlow	Ginmar Enterprises
Ray Haluch	Center Street Ludlow					\$16.00	Center Street Ludlow	

Prepared by: Michael G. Suprenant
 Michael G. Suprenant, PE - Director of Public Works/ Town Engineer Date: 07-14-2020